



Fond du Lac
920-923-4433

Oshkosh
920-235-0095

Fox Valley
920-202-8360

Green Lake
920-294-0121



www.adashunjones.com

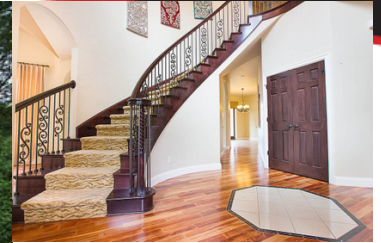
Est. Monthly Payment

(Based on 10% down payment)

15 yr. mortgage: \$6,195.76

20 yr. mortgage: \$5,123.89

30 yr. mortgage: \$4,103.69



1200 W PALISADES DR APPLETON WI 54915-1037

\$899,900 MLS# 50217522

Listed by: Coldwell Banker The Real Estate Group

The best of waterfront living at an exceptional value! This stunning custom-built home is well-appointed on a peaceful waterfront site on a beautiful stretch of the Fox River. Enjoy spectacular views from almost every room in this well-designed plan. The kitchen opens up to a great room with a beautiful floor to ceiling stone gas fireplace. Spacious main floor master suite, two story office with library above, formal dining and living space, spectacular curved staircase, upper rec room, finished walk-out Lower Level and many architectural details throughout. Dock and boat lift included.

FEATURES

County	Outagamie
Muni.	City of Appleton
Acreage	0.72
Source of Acreage Info	Assessor/Public Record
Taxes (2019)	18,860
Total Sq. Ft.	6,886
Above Grade Sq. Ft.	5,006
Below Grade Sq. Ft.	1,880
Age/Year Built	2007
Exterior Finish	Brick
Style	2 Story
School Dist.	Appleton Area

AMENITIES

Type.	Residential
Heating/Cooling	Central A/C, Forced Air
Waste	Municipal Sewer
Water	Municipal Public Water
Basement	Partial Basement, Full, Full Sz Windows Min 20x24, Walkout Entrance-Door
Garage Style	Attached
Garage Spaces	4 or More Cars
Garage Total	4
Waterfront	Yes
Water Body Name	Fox River
Water Frontage	190

ROOM SIZES

Room, Dimensions, Level	Room, Dimensions, Level
Master Bedroom, 18x20, Main	Dining Room, 13x13, Main
Bedroom 2, 13x15, Upper	Laundry Room, 8x11, Main
Bedroom 3, 11x19, Upper	Kitchen, 15x16, Main
Bedroom 4, 15x13, Upper	Living Room, 15x16, Main
Bedroom 5, 14x13, Upper	Den/Office, 14x16, Main
Family Room, 17x20, Main	Rec Room, 25x31, Lower

INCLUSIONS / EXCLUSIONS

Dishwasher, Dryer, Oven/Range, Refrigerator, Washer

DIRECTIONS

Valley Rd, North on Palisades Lane, follow as curves along Fox River to Right and turns into Palisades Drive to the end of the street.



This information, provided by seller, listing broker, and other parties, may not have been verified
In our opinion the information on this sheet is true but not guaranteed, and is subject to change or correction at any time.

