

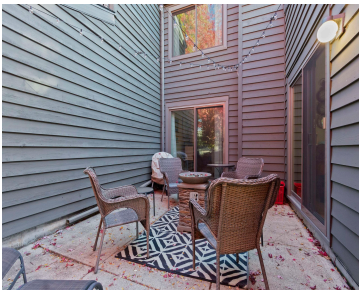
65 WEBSTER HEIGHTS DRIVE, GREEN BAY, WI,  
54301-2327

<https://www.adashunjones.com>

65 WEBSTER  
HEIGHTS Drive,  
GREEN BAY, WI,  
54301-2327



\$339,900



Love the care free living in this established condo community! Updated 3 bd 2.5 ba 2 stall garage condo is move-in ready! Enjoy the lovely updated kitchen which includes the SS applcs. Formal dining area is ample size for a large dining table for those who love to entertain! Living room boasts a wood burning...

- 3 beds
- 3 baths
- Residential
- Condo,Condominium
- Active
- 1870 sq ft



**Bridget**  
Coldwell Banker Real Estate Group



**Michelle**  
Coldwell Banker Real Estate Group



---

## Features

<b>GarageYN:</b> No	<b>AttachedGarageYN:</b> No
<b>FireplaceYN:</b> No	<b>PoolPrivateYN:</b> No
<b>Features:</b> Cable Available,Hi-Speed Internet Availbl,One,Wood Burning	<b>Above Grade Finished Area, sq ft:</b> 1870
<b>Tax Amount:</b> 4211.59	<b>Inclusions:</b> Stove, refrigerator, microwave, dishwasher, washer, dryer
<b>Exclusions:</b> Sellers personal property	

---

## Amenities

<b>Waterfront available:</b> No	<b>Cooling:</b> Central Air
<b>Amenities:</b> Dishwasher,Electric Dryer,Microwave,Range,Refrigerator,Washer	<b>Water Source:</b> Public
<b>Sewer:</b> Public Sewer	

---

## Room Sizes

Room type	Dimensions	Level
Bedroom 1	14x14	Upper
Bedroom 2	10x14	Upper
Bedroom 3	07x21	Upper
Formal Dining Room	11x12	Main
Kitchen	10x10	Main
Living Room	19x14	Main
Other Room	12x13	Main
Other Room 2	13x7	Main
Other Room 3	07x05	Main

## Building Details

**NewConstructionYN:** No  
**Exterior material:** Shake Siding

**Heating:** Forced Air  
**Parking:** Garage,Garage Door Opener

## Agent Details

**Agent Full Name:** Michelle L Stimpson  
**Agent Email:** mstimpson@coldwellhomes.com