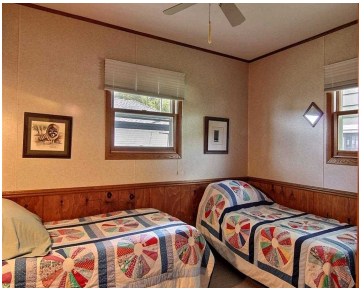


W8152 ELM POINT ROAD, LAKE MILLS, WI, 53551

https://www.adashunjones.com

W8152 ELM POINT  
Road, Lake Mills,  
WI, 53551

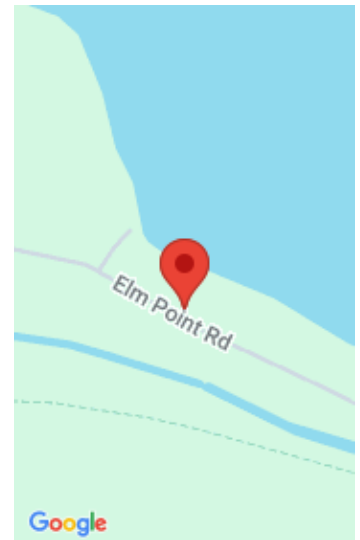


Lake Front Property with Charm. Cottage-style single family home, with efficient use of space (960 sqft), including open custom designed kitchen with lake views, three bedrooms, and two full baths. Property also includes a two-car garage and lake front porch for additional eating and seating areas. Low maintenance. Lot size is 0.15o acres with 50...

- 3 beds
- 2 baths
- R-1
- Sold
- 960 sq ft



**Toni Willems Van Dijk**  
Carlson Connection LLC



---

## Features

**GarageYN:** No

**AttachedGarageYN:** No

**FireplaceYN:** No

**PoolPrivateYN:** No

**ExteriorFeatures:** Dock

**Lot Features:** Waterfront

**Utilities:** Cable Available

**Features:** Accessible Bedroom, Accessible Full Bath, Cable Available, Dryer, Pantry, Washer, Water softener RENTED

**Above Grade Finished Area, sq ft:** 960

**Tax Year:** 2013

**Tax Amount:** 5962

**Inclusions:** Window/Wall AC, All window coverings

---

## Amenities

**Waterfront available:** Waterfront, 1

**Water Body Name:**  
Rock

**Amenities:**

Dishwasher, Disposal, Dryer, Freezer, Microwave, Range, Refrigerator, Washer, Water Softener Rented

**Water Source:**  
Shared Well

**Sewer:** Public Sewer

---

## Building Details

**NewConstructionYN:** No

**Heating:** Radiant, Electric

**Basement:** None

**Exterior material:** Vinyl Siding

**Parking:** Paved

---

## Agent Details

**Agent Full Name:** Toni Willems Van Dijk

**Agent Email:** toniwvd@coldwellhomes.com