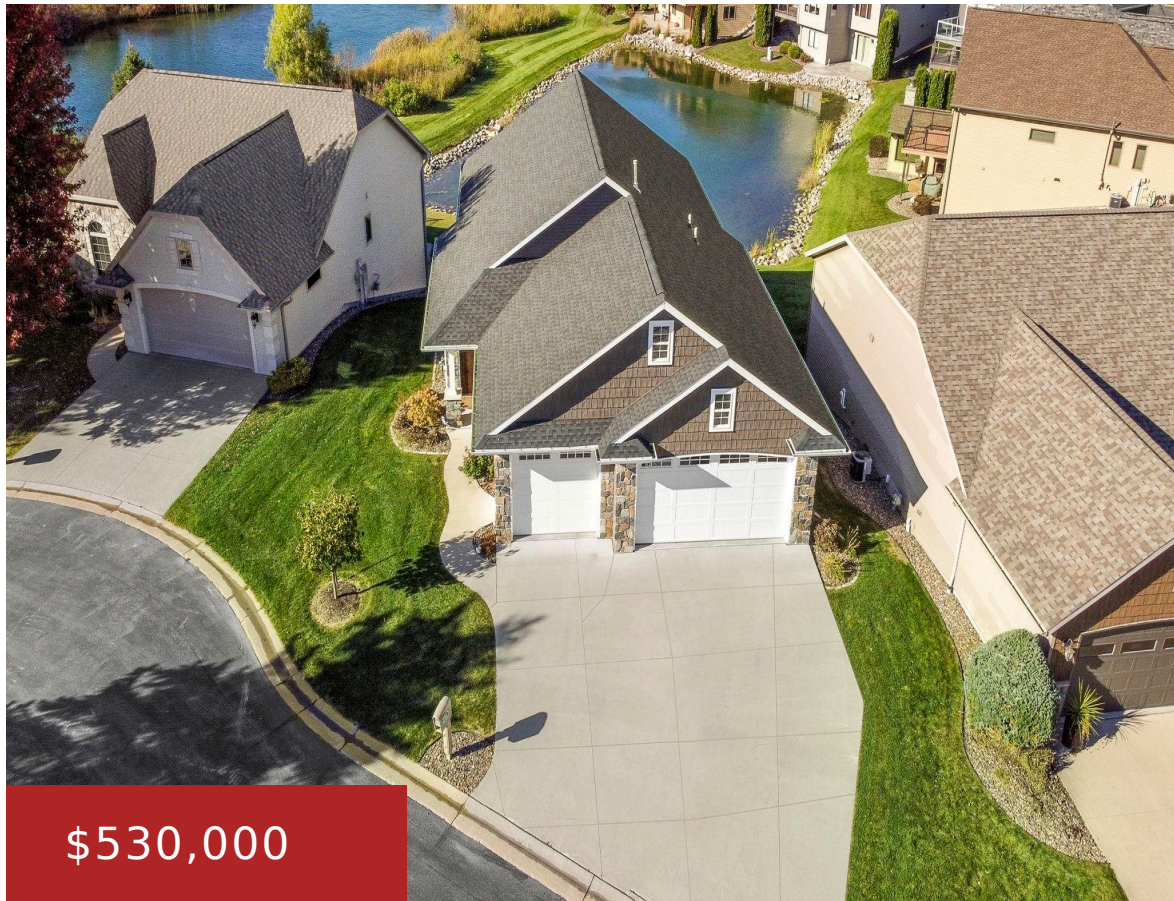


W6938 RIVENDALE COURT, GREENVILLE, WI, 54942

https://www.adashunjones.com

W6938 RIVENDALE  
Court, Greenville,  
WI, 54942

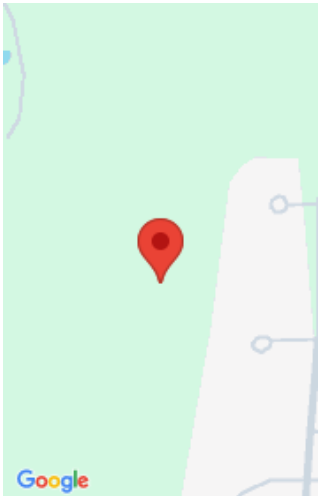


Experience elegance and privacy in this beautiful custom-built, three car garage, freestanding zero-entry level condo located in the desirable Greenville, Wisconsin. Step inside to an open-concept living space featuring cathedral ceiling and two gas fireplaces. The oversized Marble island, custom cabinets, walk-in pantry, and full appliance package in the kitchen are sure to impress. The...

- 3 beds
- 3 baths
- Residential
- Condominium, Residential
- Closed
- 2218 sq ft



**Sihana**  
Coaction Real Estate, LLC



---

## Features

<b>GarageYN:</b> No	<b>AttachedGarageYN:</b> No
<b>FireplaceYN:</b> No	<b>PoolPrivateYN:</b> No
<b>Features:</b> Balcony/Deck/Patio,Gas,Hi-Speed Internet Availbl,Kitchen Island,One,Pantry,Security System,Vaulted Ceiling,Wet Bar	<b>Above Grade Finished Area, sq ft:</b> 1376
<b>Below Grade Finished Area, sq ft:</b> 842	<b>Tax Amount:</b> 5214
<b>Inclusions:</b> Washer, Dryer, Stove, Refrigerator, Microwave, Dishwasher	<b>Exclusions:</b> Seller's Personal Property

---

## Amenities

<b>Waterfront available:</b> No	<b>Amenities:</b> Dishwasher,Disposal,Dryer,Microwave,Range/Oven,Refrigerator,Washer
<b>Water Source:</b> Municipal/City	<b>Sewer:</b> Municipal Sewer

---

## Room Sizes

Room type	Dimensions	Level
Bedroom 1	16x17	Main
Bedroom 2	10x11	Lower
Bedroom 3	11x12	Lower
Family Room	18x13	Lower
Formal Dining Room	12x11	Main
Kitchen	8x14	Main
Living Or Great Room	20x15	Main

## Building Details

**NewConstructionYN:** No  
**Exterior material:** Stone,Vinyl

**Heating:** Central A/C, Forced Air  
**Parking:** Attached,Garage - 3 Car

## Agent Details

**Agent Full Name:** Sihana Elmazi  
**Agent Email:** [sihana@coactionre.com](mailto:sihana@coactionre.com)