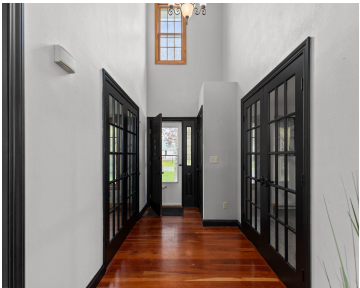


W6173 LONG COURT, APPLETON, WI, 54914

<https://www.adashunjones.com>

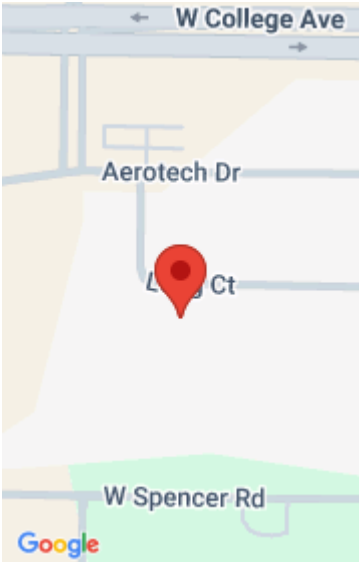
W6173 LONG Court,
APPLETON, WI,
54914



\$595,000

Enjoy stunning backyard views with 3 decks, a partially inground pool, beautiful landscaping, & a custom-built garage/shed for extra storage. Inside offers endless possibilities with bonus spaces perfect for a mother-in-law suite, office, extra bedroom, or hobby space. The lower-level feels like its own apartment featuring a huge bedroom with egress, a full bath with...

• 3299 sq ft



Kathy
Realty One Group Haven

Features

Price per sq ft: \$180.36

Lot Size, acres: 0.57

For Sale or Rent: For Sale

Parcel Number: 110161800

AttachedGarageYN: No

Cooling: Central Air

PoolPrivateYN: No

Features: Gas, Water Softener-Own

Above Grade Finished Area, sq ft: 2480

Water Source: Public

Tax Amount: \$6,356.42

Area, sq ft: 3,299 sq ft

Year built: 1994

Garage Spaces: 3

GarageYN: No

Heating: Forced Air

FireplaceYN: No

PoolFeatures: In Ground

Amenities: Dishwasher, Electric Dryer, Range, Washer

Below Grade Finished Area, sq ft: 819

Sewer: Public Sewer

Room Sizes

Main Level Bedroom 1 16x13 Kitchen 14x13 Living Room 15x21 Dining Room 14x11 Other Room 11x13 Other Room 2 11x12 Upper Level Bedroom 2 11x11 Bedroom 3 11x13 Bedroom 4 19x11 Lower Level Bedroom 5 13x16 Family Room 23x13 Unfinished 10x10 Unfinished 2 12x9 Unfinished 3 13x12

Building Details

NewConstructionYN: No

Basement: Finished,Full,Full Sz Windows Min 20x24,Partial Fin. Contiguous,Sump Pump

Exterior Material: Brick, Fiber Cement **Parking:** Attached, Garage Door Opener

Agent Details

Agent Full Name: Kathryn A. Schumann

Agent Email: kschumann1997@gmail.com

Open House

05/16/26 13:00 to 14:00