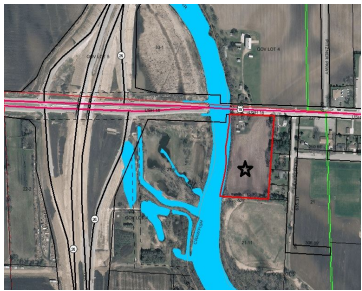


W5951 HIGHWAY 18, JEFFERSON, WI, 53549-1057

https://www.adashunjones.com

W5951 Highway 18,
Jefferson, WI,
53549-1057

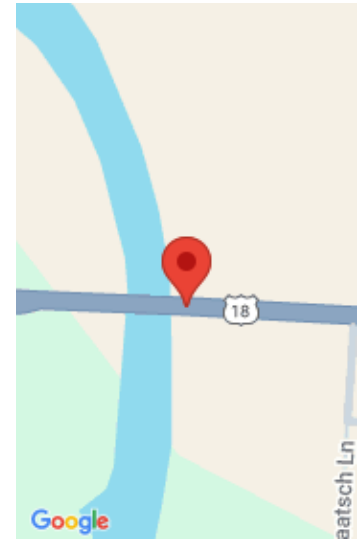


Great investment opportunity, Town of Jefferson urban service area! The next hot corner at the by-pass Hwy18/26 interchange. Zoned AG but planned for future commercial use...it will happen! Great for business: mall space, hotel, office complex, green house, etc. 5.02 acres with 600' of Crawfish River frontage. While you wait, earn a return on your...

- 3 beds
- 1 bath
- A-1
- Sold
- 1300 sq ft



Peter Gross
First Weber Inc



Features

GarageYN: Yes

FireplaceYN: No

Lot Features: Waterfront

Above Grade Finished Area, sq ft: 1300

Tax Amount: 2005

AttachedGarageYN: No

PoolPrivateYN: No

Features: Main Level,Water softener RENTED

Tax Year: 2013

Inclusions: Window/Wall AC

Amenities

Waterfront available: Waterfront, River Front, 1 **Water Body Name:** Crawfish River

Amenities: Water Softener Rented

Water Source: Well

Sewer: Private Sewer

Building Details

NewConstructionYN: No

Heating: Radiant, Natural Gas

Basement: Crawl Space,Partial

Parking: Additional Parking,Detached,Garage Door Opener,Paved

Agent Details

Agent Full Name: Peter Gross

Agent Email: pgross@firstweber.com