

W5355 E PIONEER ROAD, FOND DU LAC, WI, 54937

https://www.adashunjones.com

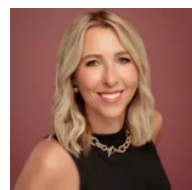
W5355 E PIONEER  
Road, FOND DU  
LAC, WI, 54937



\$235,000

Great bi-level with 3 units. This triplex features unit 1 with 3bed/2bath- on the main level is 1bed/1bath and lower level has 2bed/1bath, unit 2 on the lower back has 1bed/1bath, and unit 3 on the upper back has 1bed/1bath. All units have a washer/dryer hookup and include a refrigerator and stove/oven. Tenants own their...

- Residential Income
- Multi-Family, Multi-Family(3Units)
- Closed
- 2621 sq ft



**Christine**  
Adashun Jones, Inc.



---

## Features

**GarageYN:** No

**FireplaceYN:** No

**Above Grade Finished Area, sq ft:** 2621

**Exclusions:** 24 hour showing notice

**AttachedGarageYN:** No

**PoolPrivateYN:** No

**Tax Amount:** 2929

---

## Amenities

**Waterfront available:** No

**Sewer:** Public Sewer

**Water Source:** Well

---

## Building Details

**NewConstructionYN:** No

**Heating:** Radiant

**Parking:** Outside

**ParkingTotal:** 3

**Exterior material:** Aluminum Siding

---

## Agent Details

**Agent Full Name:** Christine Whealon

**Agent Email:** christinewhealon@adashunjones.com