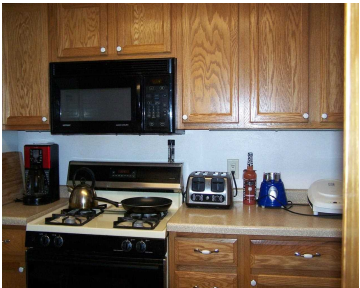


W3006 APPROACH ROAD, DOYLESTOWN, WI, 53928

https://www.adashunjones.com

W3006 Approach
Road, Doylestown,
WI, 53928

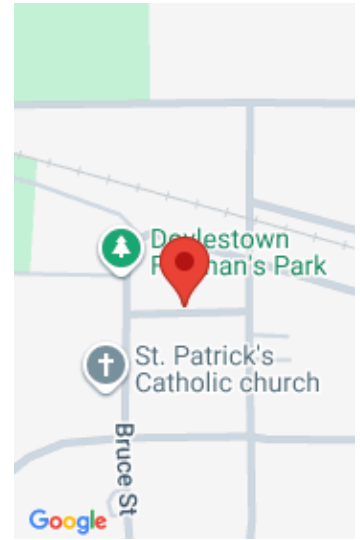


Here's an opportunity to own at a very affordable price. One and a half story on large corner lot in quaint friendly neighborhood. Two Bedroom plus Office/Den. Full Bath and Master Bedroom on Main Level. Kitchen remodel, Window replacement, and Central Air 2008/2009. Newer roof, complete tear-off 2012. Newer furnace. Upper Level foam insulated. Newer...

- 2 beds
- 1 bath
- Res
- Sold
- 944 sq ft



Debra Meister
Starritt-Meister Realty, LLC



Features

GarageYN: Yes

FireplaceYN: No

Lot Features: Corner Lot

Above Grade Finished Area, sq ft: 944

Tax Amount: 1106

AttachedGarageYN: No

PoolPrivateYN: No

Features: Accessible Bedroom, Accessible Entrance, Accessible Full Bath, Dryer, Main Level, Washer

Tax Year: 2013

Inclusions: All window coverings

Amenities

Waterfront available: No

Amenities: Dryer, Microwave, Range, Refrigerator, Washer

Sewer: Private Sewer

Cooling: Central Air

Water Source: Well

Building Details

NewConstructionYN: No

Basement: Partial

Heating: Forced Air, Electric, Propane, Wood

Parking: Detached

Agent Details

Agent Full Name: Debra Meister

Agent Email: debmeister@starritt-meisterrealty.com