

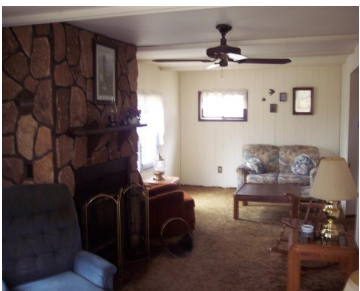
S7230A BLUFF ROAD, WHEATLAND, WI, 54624

https://www.adashunjones.com

S7230A Bluff Road,
Wheatland, WI,
54624



\$42,000

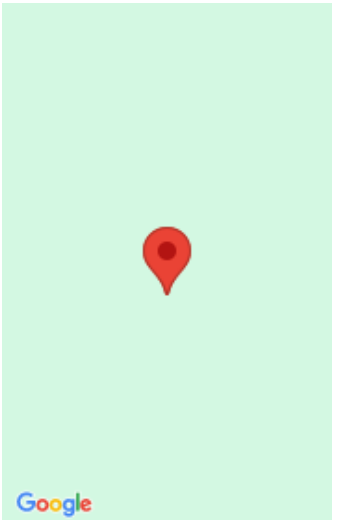


Fully furnished 14X70 mobile home on a cement block foundation with a 28X11 addition added on. Home is on 1.4 wooded acres with a partial view of the river. Includes one car garage and two small storage sheds. There is also a fish cleaning room next to the garage. Home is an open concept with...



Jim Weisbecker
Century 21 Affiliated

- 3 beds
- 1 bath
- Manufactured On Land,Res
- Sold
- 1081 sq ft



Features

GarageYN: Yes

FireplaceYN: Yes

Utilities: Cable Available

AttachedGarageYN: No

PoolPrivateYN: No

Features: Cable Available,Dryer,Main Level,Washer,Wood Burning

Above Grade Finished Area, sq ft: 1081 **Tax Year:** 2011

Inclusions: All window coverings

Amenities

Waterfront available: No

Water Source: Well

Amenities: Dryer,Microwave,Range,Refrigerator,Washer

Sewer: Private Sewer

Building Details

NewConstructionYN: No

Basement: None

Parking: Detached,Unpaved

Heating: Forced Air, Propane, Wood

Exterior material: Wood Siding

Agent Details

Agent Full Name: Jim Weisbecker

Agent Email: jweisbecker@c21affiliated.com