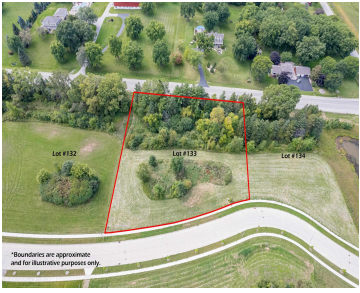


PURDY PARKWAY, APPLETON, WI, 54913

https://www.adashunjones.com

PURDY Parkway,  
Appleton, WI,  
54913



This picturesque 2.39-acre lot in the desirable Apple Hill Farms Subdivision on Appleton's north side is the perfect place to build your dream home. Conveniently located near schools, restaurants, highways, and the Apple Creek YMCA Nature Preserve, it offers easy access to everything you need. A serene pond sits just to the north of the...

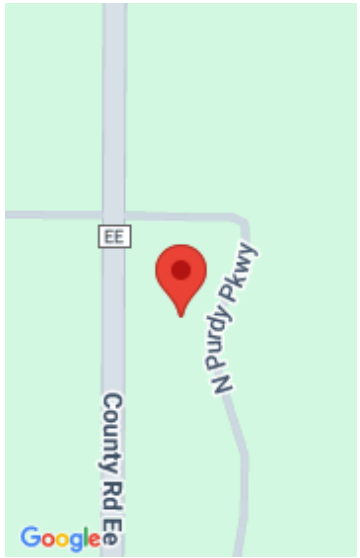
- Land
- Residential, Vacant Land/Acreage
- Active



**Danielle**  
Coldwell Banker Real Estate Group



**Bruce**  
Coldwell Banker Real Estate Group



---

## Features

**GarageYN:** No

**AttachedGarageYN:** No

**FireplaceYN:** No

**PoolPrivateYN:** No

**Lot Features:** Suburb **Utilities:** All Underground, Cable Available, Electricity Available, Gas

**Tax Amount:** 1767

---

## Amenities

**Waterfront available:** No

**Water Source:** Municipal/City

**Sewer:** Municipal Sewer

---

## Building Details

**NewConstructionYN:** No

---

## Agent Details

**Agent Full Name:** Danielle M Hart

**Agent Email:** dhart@coldwellhomes.com