

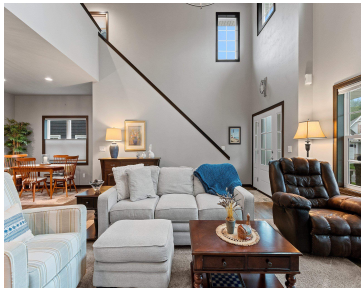
664 OLIVE TREE DRIVE, GREEN BAY, WI, 54313-3302

https://www.adashunjones.com

664 OLIVE TREE
Drive, GREEN BAY,
WI, 54313-3302



\$429,900

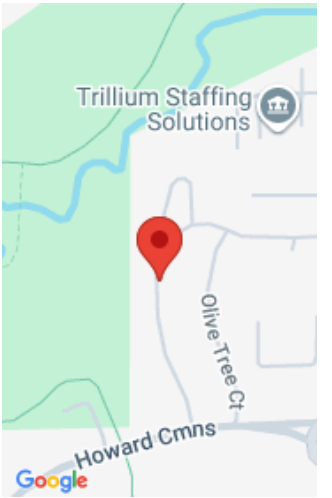


Location, Location! Near Howard Commons, YMCA & Meadowbrook Park is this 2-story offering a lifestyle of ease & convenience! A zero-entry design flows seamlessly with an upper loft & egress window in the lower level preparing you for future expansion. Soaring 2-story great room with a gas fireplace adds a wow factor that carries into...



Diane
Resource One Realty, LLC

- 2 beds
- 3 baths
- Residential
- PUD, Single Family Residence
- Active
- 1643 sq ft



Features

GarageYN: No

FireplaceYN: No

Lot Features: Sidewalk

Above Grade Finished Area, sq ft:
1643

Inclusions: range, refrigerator, DW, disposal, microwave, wtr softener, Reverse osmosis system, washer, dryer, painting over FP, long wooden shelf in basement

AttachedGarageYN: No

PoolPrivateYN: No

Features: At Least 1 Bathtub,Breakfast Bar,Cable Available,Gas,Hi-Speed Internet Availbl,One,Pantry,Split Bedroom,Walk-in Closet(s),Walk-in Shower,Water Softener-Own

Tax Amount: 4957

Exclusions: personal property

Amenities

Waterfront available: No

Cooling: Central Air

Amenities: Dishwasher,Disposal,Dryer,Microwave,Range,Refrigerator,Washer **Water Source:** Public

Sewer: Public Sewer

Room Sizes

Room type	Dimensions	Level
Bedroom 1	15x11	Main
Bedroom 2	12x11	Upper
Kitchen	14x11	Main
Living Room	18x16	Main
Dining Room	11x10	Main
Other Room	11x08	Upper

Building Details

NewConstructionYN: No

Basement: Full,Full Sz Windows Min 20x24,Radon Mitigation System,Stubbed for Bath,Sump Pump

Parking: Attached,Garage Door Opener

Heating: Forced Air

Exterior material: Aluminum Siding,Brick,Fiber Cement

Agent Details

Agent Full Name: Diane Campshure Walczyk

Agent Email: campshure@resource1gb.com