

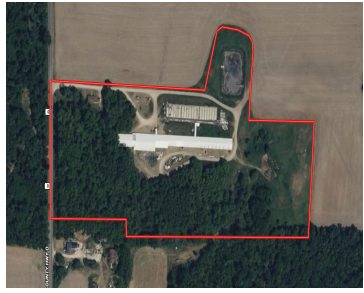
# N2542 COUNTY RD O ROAD, OXFORD, WI, 53952

<https://www.adashunjones.com>

N2542 County Rd O  
Road, Oxford, WI,  
53952



**\$450,000**

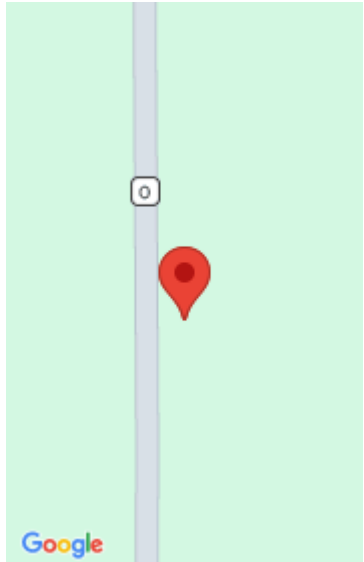


Set on 23.88 acres in Marquette County, this former sow facility offers big potential for your next ag or commercial venture. The operation previously supported just under 1,000 head, with multiple heated rooms, feeders, water systems, slatted concrete, 2-4 ft pit depth, and a 16 ft manure lagoon. The main facility stretches approx. 740 ft...

• 1240 sq ft



**Travis Hamele**  
United Country Midwest Lifesty



---

## Features

**Days on Market:** 146

**Lot Size, acres:** 23.88

**Parcel Number:** 020-01296-0000

**AttachedGarageYN:** No

**Cooling:** Wall Unit(s)

**PoolPrivateYN:** No

**Amenities:** Range, Refrigerator

**Below Grade Finished Area, sq ft:** 400

**Tax Year:** 2024

**Tax Amount:** \$13,088

**Area, sq ft:** 1,240 sq ft

**Year built:** 999

**GarageYN:** No

**Heating:** Forced Air, Propane

**FireplaceYN:** No

**Features:** Accessible Bedroom, Accessible Full Bath, High Speed Internet

**Above Grade Finished Area, sq ft:** 836

**Water Source:** Well

**Sewer:** Private Sewer

---

## Building Details

**NewConstructionYN:** No

**Exterior Material:** Vinyl Siding

**Basement:** Concrete,Full,Partially Finished

**Parking:** No Garage, Unpaved

---

## Agent Details

**Agent Full Name:** Travis Hamele

**Agent Email:** [travis@hameleauctions.com](mailto:travis@hameleauctions.com)