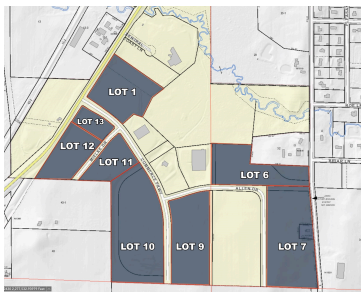
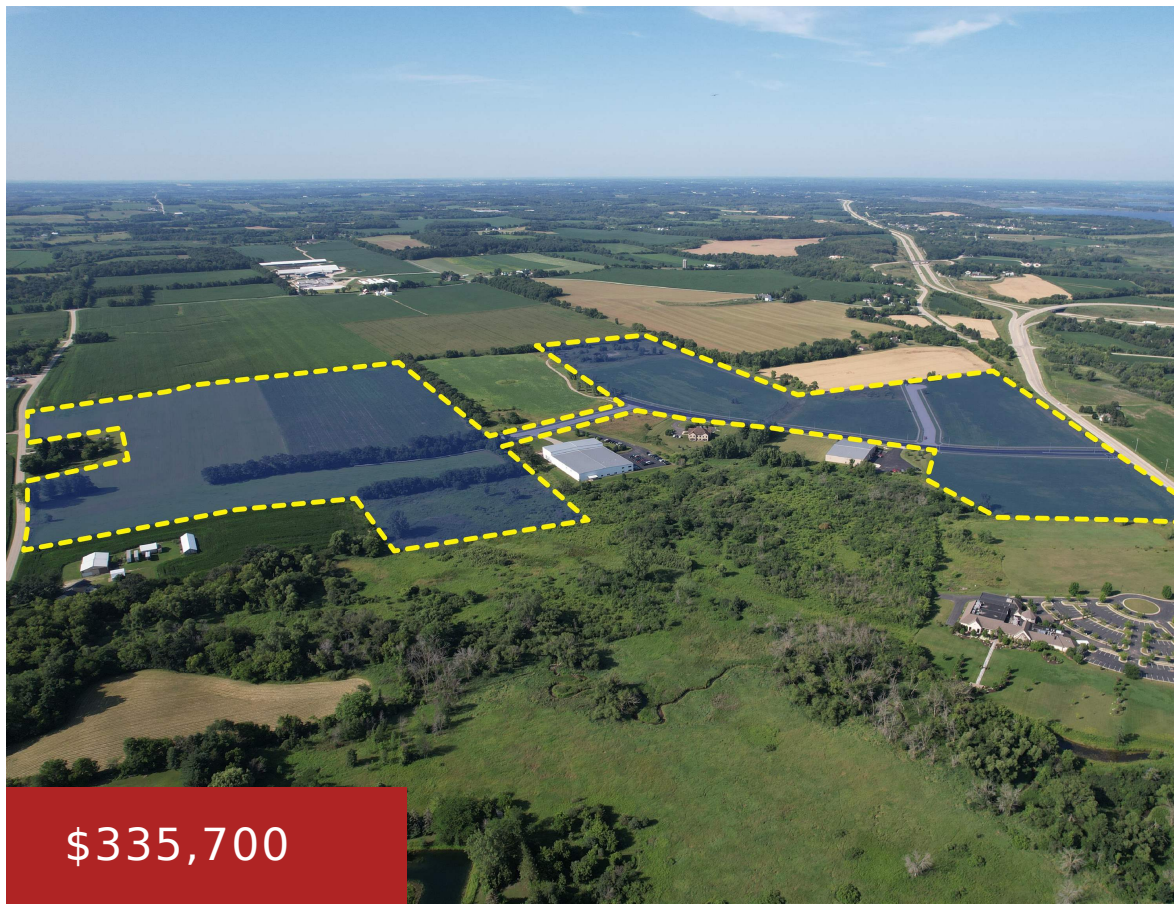


LOT #1 COMMERCE PARKWAY, FORT ATKINSON, WI, 53538

<https://www.adashunjones.com>

Lot #1 Commerce Parkway, Fort Atkinson, WI, 53538

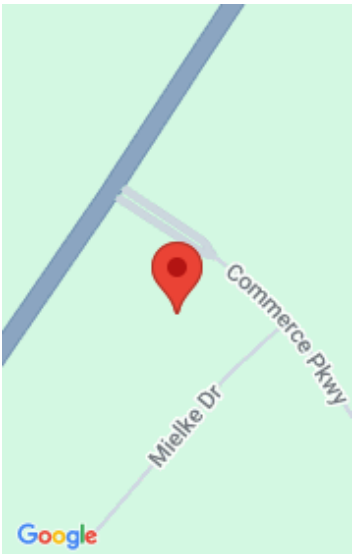


11.2 acre parcel in Robert L. Klement Business Park that is in the City of Fort Atkinson! Situated just 40 minutes from Madison and the Milwaukee area, 20 minutes to Janesville and roughly 2 hours to Chicago, this location is ideal for numerous businesses. No impact fees, high speed fiber internet, city water/sewer and close...

- Commercial/Industrial
- Active



Brandon Housley
Artisan Graham Real Estate



Features

GarageYN: No

AttachedGarageYN: No

FireplaceYN: No

PoolPrivateYN: No

Lot Features: Corner Lot **Utilities:** Natural Gas Available, Electricity Available, Internet - Fiber

Tax Year: 2021

Amenities

Waterfront available: No **Water Source:** Municipal water available, None

Sewer: Public Sewer, None

Building Details

NewConstructionYN: No

Agent Details

Agent Full Name: Brandon Housley

Agent Email: bhousley@artisangraham.com