

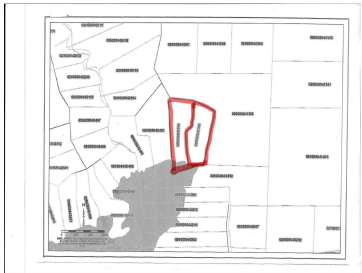
L10 & L11 NORTHERN SHORES WAY, OJIBWA, WI,  
54896

<https://www.adashunjones.com>

L10 & L11 Northern  
Shores Way,  
Ojibwa, WI, 54896



\$69,900

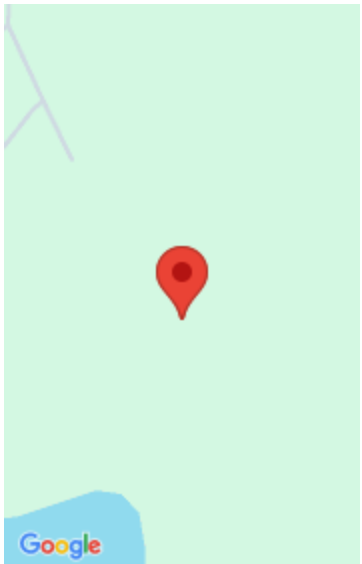


The best of both worlds! Hunting, fishing, ATV, Snowmobiling. 11+ acres with approx 481 ft of lakefront..private road..5 miles from Winter WI

- Single family
- Active



**Jan Davis**  
Evansville Realty LLC



---

## Features

<b>GarageYN:</b> No	<b>AttachedGarageYN:</b> No
<b>FireplaceYN:</b> No	<b>PoolPrivateYN:</b> No
<b>Lot Features:</b> Wooded	<b>Utilities:</b> Electricity Available
<b>Tax Year:</b> 2023	<b>Tax Amount:</b> 507

---

## Amenities

<b>Waterfront available:</b> Has actual water frontage, Lake	<b>Water Source:</b> None
<b>Sewer:</b> None	

---

## Building Details

**NewConstructionYN:** No

---

## Agent Details

<b>Agent Full Name:</b> Jan Davis	<b>Agent Email:</b> jandavisrealtor@hotmail.com
-----------------------------------	---