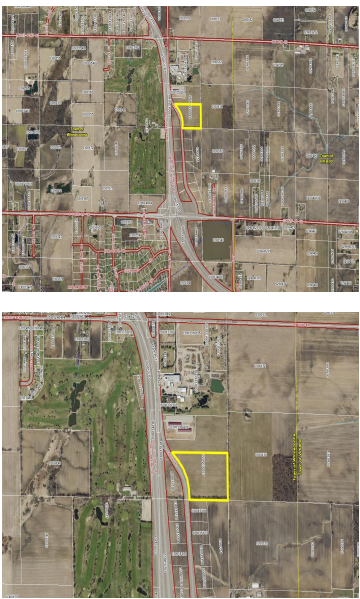
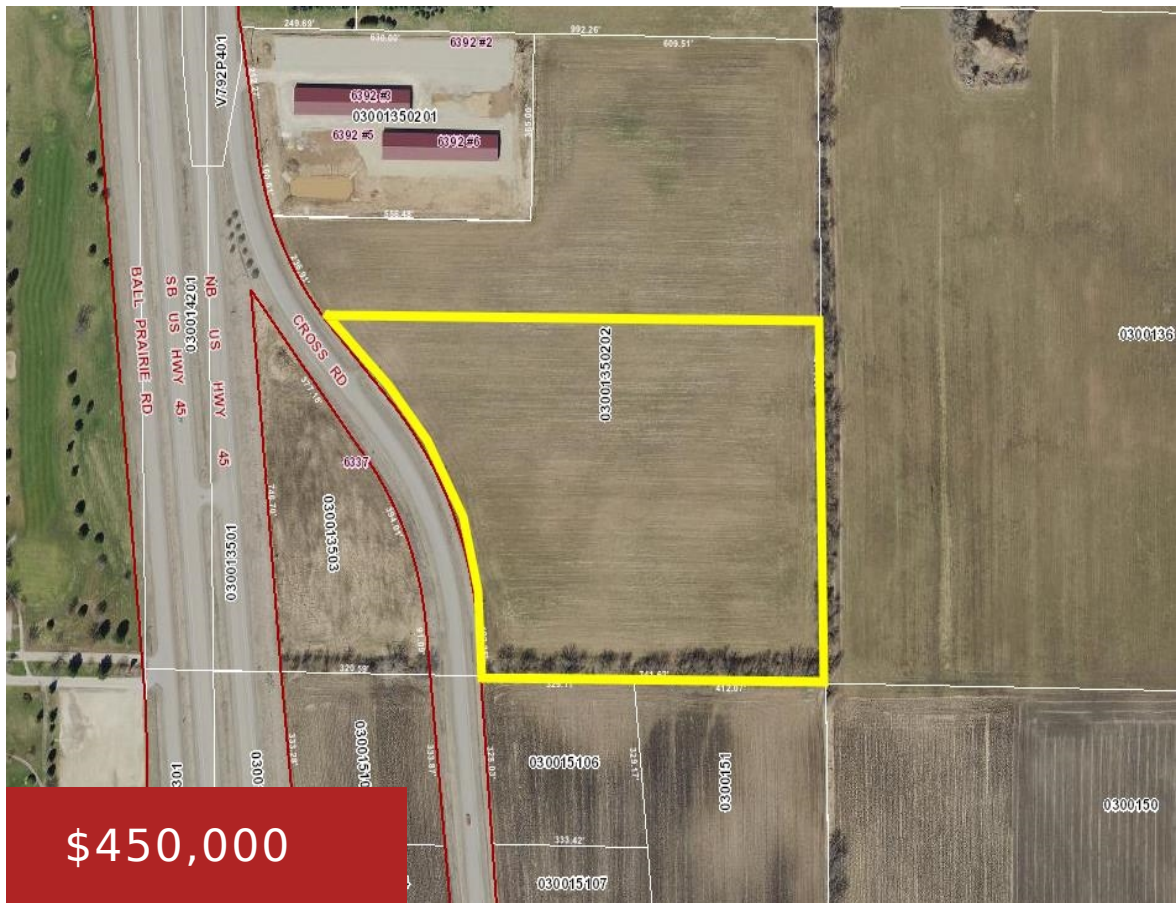


CROSS ROAD, WINNECONNE, WI, 54986

<https://www.adashunjones.com>

CROSS Road,
WINNECONNE, WI,
54986

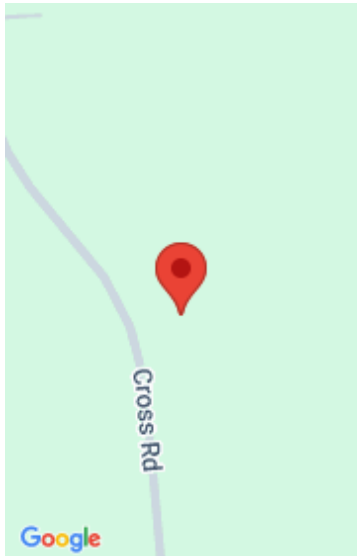


Prime opportunity awaits on this 15-acre parcel with direct visibility from HWY 45 and proximity to Hwy 116/Hwy 45 On-Off ramps. Currently zoned agricultural, this versatile property offers endless potential for storage units, commercial spaces, and more with the Town of Winneconne's future land use plan identifying this as potential future commercial. Benefit from its...

- Land
- Agricultural,Vacant Land/Acreage
- Active



Andy
Beiser Realty, LLC



Features

GarageYN: No

FireplaceYN: No

Lot Features: Level, Rolling Slope

Tax Amount: 75

AttachedGarageYN: No

PoolPrivateYN: No

Utilities: Electricity Available, Phone Available

Amenities

Waterfront available: No

Sewer: None

Water Source: None

Building Details

NewConstructionYN: No

Agent Details

Agent Full Name: Andy T Beiser

Agent Email: andyb@beiserrealty.com