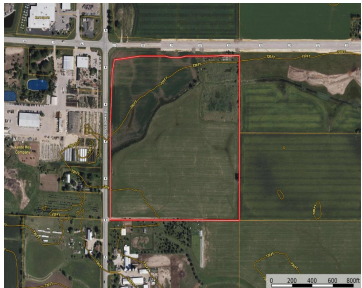
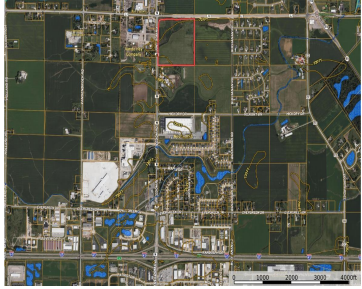


COUNTY N ROAD, APPLETON, WI, 54913

<https://www.adashunjones.com>

COUNTY N Road,
APPLETON, WI,
54913



Positioned in a highly desirable area, this 37.15-acre parcel offers exceptional potential for commercial or mixed-use development just minutes from Highway 41.



Craig
Base Camp Country Real Estate, Inc



Features

Price per sq ft: \$51,816.96

For Sale or Rent: For Sale

GarageYN: No

FireplaceYN: No

Lot Features: Corner Lot

Water Source: None

Tax Amount: \$332.65

Lot Size, acres: 37.15

Parcel Number: 200018600

AttachedGarageYN: No

PoolPrivateYN: No

Utilities: Electricity Available

Sewer: None

Building Details

NewConstructionYN: No

Agent Details

Agent Full Name: Craig J. Zwiers

Agent Email: craig.zwiers@basecampcountry.com