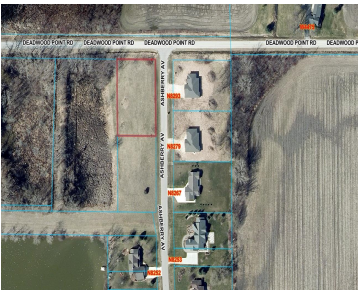


ASHBERRY AVENUE, FOND DU LAC, WI, 54937

https://www.adashunjones.com

ASHBERRY Avenue,
FOND DU LAC, WI,
54937



Just off the shores of Lake Winnebago and Fett’s Pond in the Deadwood Point Subdivision this .71 acre lot is one of the best remaining places to build on the Northeast side of Fond du Lac and especially at this price. Established subdivision with paved roads to municipal standards, sewer available, private well, lake views,...

- Land
- Residential,Vacant Land/Acreage
- Closed



Kevin
Adashun Jones, Inc.



Features

GarageYN: No

AttachedGarageYN: No

FireplaceYN: No

PoolPrivateYN: No

Lot Features: Corner Lot, Level, Rectangular Lot, Rural - Subdivision

Utilities: Cable Available, Electricity Available, Phone Available

Tax Amount: 478.09

Amenities

Waterfront available: No

Water Source: Well

Sewer: Public Sewer

Building Details

NewConstructionYN: No

Agent Details

Agent Full Name: Kevin Jones

Agent Email: kevin@adashunjones.com