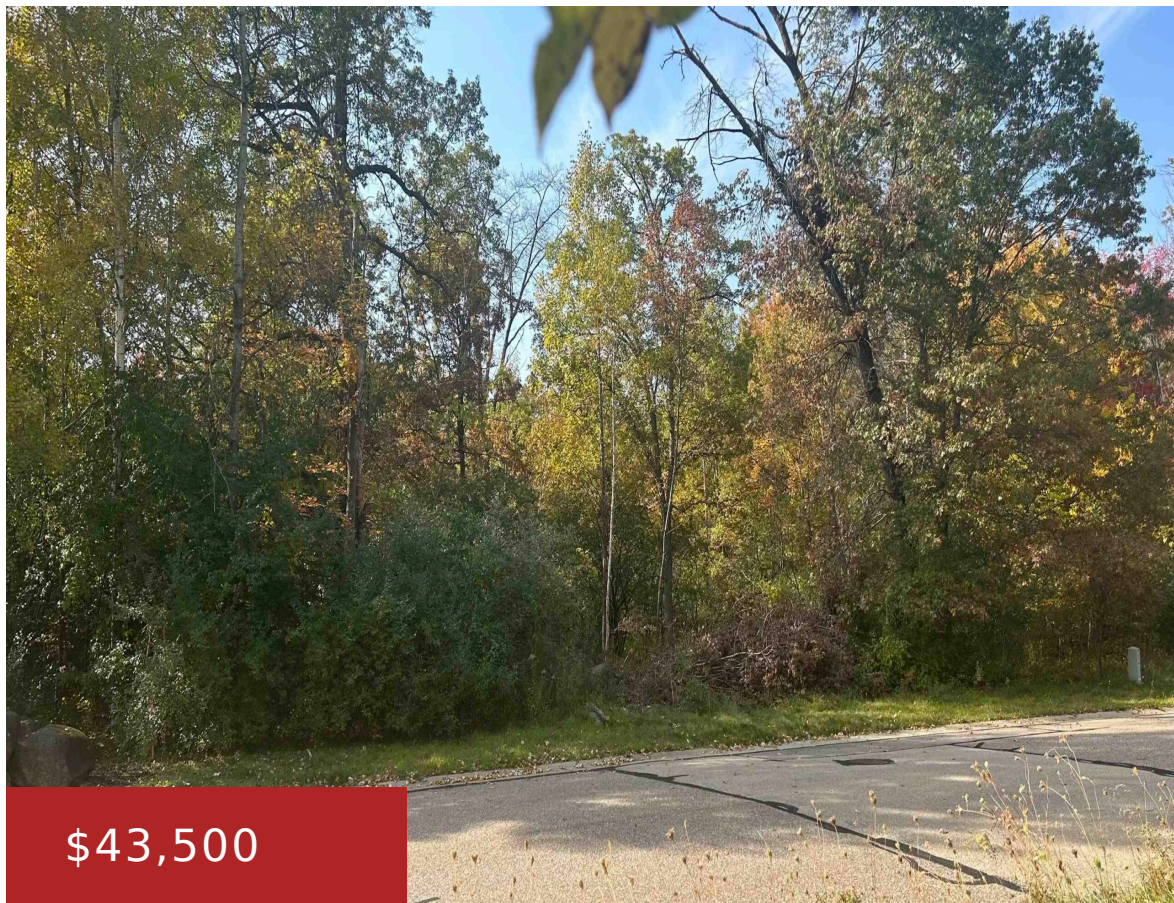


983 THOMAS TRAIL, WAUPACA, WI, 54981

https://www.adashunjones.com

983 THOMAS Trail,  
WAUPACA, WI,  
54981

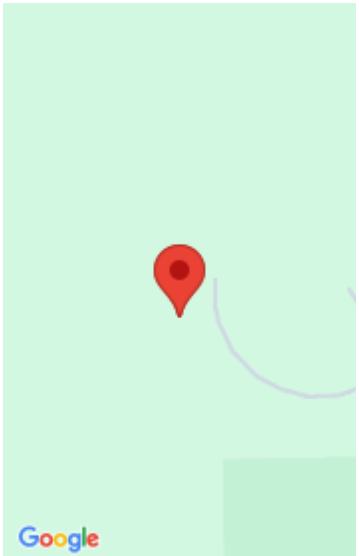


Enjoy this half acre wooded lot for your future dream home. Backs up to the Woods and city owned Swan Park. Swan Park features a walking trail, a new splash pad and Brainerds Bridge. Quick access to Hwy 10 and minutes from downtown Waupaca. The property has recently been surveyed.

- Land
- Residential,Vacant Land/Acreage
- Closed



**Cindy**  
Acre Realty, Ltd.



---

## Features

**GarageYN:** No

**FireplaceYN:** No

**Lot Features:** Adjacent to Public Land, Wooded

**Tax Amount:** 302

**AttachedGarageYN:** No

**PoolPrivateYN:** No

**Utilities:** Cable Available, Electricity Available, High Speed Internet, Gas

---

## Amenities

**Waterfront available:** No

**Sewer:** Shared Municipal Waste

**Water Source:** Municipal/City

---

## Building Details

**NewConstructionYN:** No

---

## Agent Details

**Agent Full Name:** Cindy Biechler

**Agent Email:** cindy.biechler@acrerealty.com