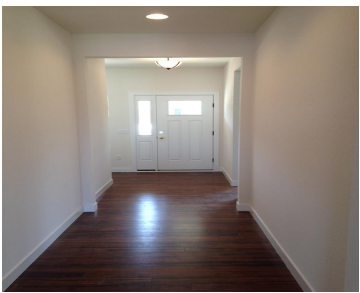


9502 SILVERSTONE LANE, MADISON, WI, 53593

https://www.adashunjones.com

9502 Silverstone
Lane, Madison, WI,
53593



Gorgeous new construction in coveted Hawk's Meadow ready July 2014! Split bedroom ranch with open concept living; perfect for entertaining. Full exposure with deck and patio finished for you — lower level awaits your imagination. Loads of storage and added drop zone for stress-free living. Private master suite offers tray ceiling, custom tiled shower &...

- 3 beds
- 2 baths
- TR-C3
- Sold
- 1818 sq ft



D'anne Long
Tim O'Brien Homes LLC



Features

GarageYN: Yes

FireplaceYN: Yes

Utilities: Cable Available

Above Grade Finished Area, sq ft:
1818

Tax Amount: 1644

AttachedGarageYN: Yes

PoolPrivateYN: No

Features: Breakfast Bar,Cable Available,Gas,Main Level,Pantry,Walk-in Closet(s)

Tax Year: 2013

Amenities

Waterfront available: No

Amenities: Dishwasher,Disposal,ENERGY STAR Qualified Appliances,Microwave,Range,Refrigerator

Sewer: Public Sewer

Cooling: Central Air

Water Source:
Public

Building Details

NewConstructionYN: Yes

Basement: Bath/Stubbed,Full,Full Size Windows/Exposed,Sump Pump,Walk-Out Access

Parking: Attached,Garage Door Opener,Paved

Heating: Forced Air, Natural Gas

Exterior material:
Brick,Stone,Vinyl Siding

Agent Details

Agent Full Name: D'anne Long

Agent Email: dlong@halenhomes.com