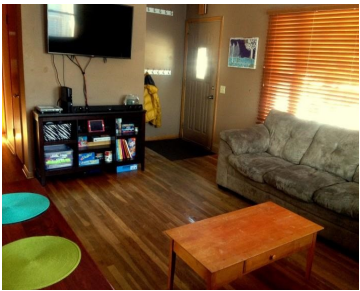
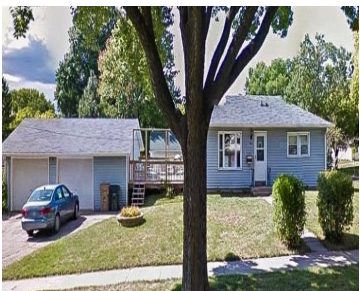


942 MAYFAIR AVENUE, MADISON, WI, 53714

https://www.adashunjones.com

942 Mayfair Avenue, Madison, WI, 53714

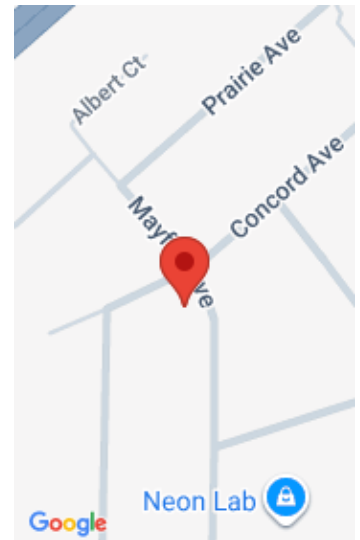


4+ bedroom home in a quiet, established, sought after neighborhood on the east side of Madison. Close to everything – shopping, downtown, and you can see the fabulous Hawthorne Elementary school from the house! LARGE GARAGE has plenty of room for two vehicles plus bikes, mower, tools, etc. Huge deck – great for warm weather...

- 4 beds
- 2 baths
- TR-C1
- Sold
- 1344 sq ft



Seth Pfaehler
The McGrady Group, LLC



Features

GarageYN: Yes

FireplaceYN: No

Lot Features: Corner Lot

Above Grade Finished Area, sq ft: 864

Tax Year: 2014

Inclusions: All window coverings

AttachedGarageYN: No

PoolPrivateYN: No

Features: Lower Level,Pantry,Water softener inc

Below Grade Finished Area, sq ft: 480

Tax Amount: 3258

Amenities

Waterfront available: No

Amenities: Dishwasher,Disposal,Freezer,Microwave,Range,Refrigerator,Water Softener Owned

Sewer: Public Sewer

Cooling:
Central Air

Water Source:
Public

Building Details

NewConstructionYN: No

Basement: Partially Finished

Parking: Detached,Garage Door Opener,Paved

Heating: Forced Air, Natural Gas

Exterior material: Vinyl Siding

Agent Details

Agent Full Name: Seth Pfaehler

Agent Email: seth@themcgradygroup.com