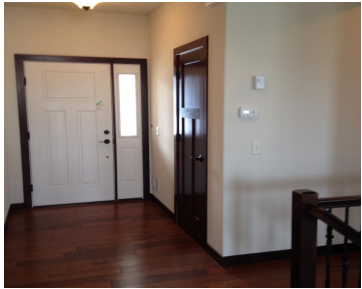


9406 SILVERSTONE LANE, MADISON, WI, 53593

https://www.adashunjones.com

9406 Silverstone  
Lane, Madison, WI,  
53593

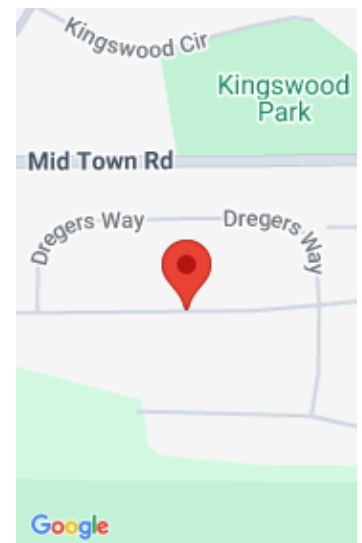


READY FOR IMMEDIATE CLOSING!!!! Open-concept split-bedroom ranch enjoys full exposure w/ future potential in Lower Level. Family cook will love the maple cabinets, island, and granite countertops. 12×12 deck leads off dinette for easy entertaining. Rich hardwoods and loads of natural and recessed light make this home glow. Master suite offers tray ceiling, abundant closet...

- 3 beds
- 2 baths
- TR-C3
- Sold
- 1600 sq ft



**D'anne Long**  
Tim O'Brien Homes LLC



---

## Features

**GarageYN:** Yes

**FireplaceYN:** Yes

**Utilities:** Cable Available

**AttachedGarageYN:** Yes

**PoolPrivateYN:** No

**Features:** Accessible Bedroom, Accessible Full Bath, Cable Available, Gas, Kitchen Island, Main Level, Pantry, Vaulted Ceiling(s), Walk-in Closet(s)

**Above Grade Finished Area, sq ft:** 1600

**Tax Year:** 2013

**Tax Amount:** 1112

---

## Amenities

**Waterfront available:** No

**Cooling:** Central Air

**Amenities:** Dishwasher, Disposal, ENERGY STAR Qualified Appliances, Microwave, Range, Refrigerator

**Water Source:** Public

**Sewer:** Public Sewer

---

## Building Details

**NewConstructionYN:** No

**Heating:** Forced Air, Natural Gas

**Basement:** Bath/Stubbed, Full, Full Size Windows/Exposed, Sump Pump, Walk-Out Access

**Exterior material:** Brick, Stone, Vinyl Siding

**Parking:** Attached, Garage Door Opener, Paved

---

## Agent Details

**Agent Full Name:** D'anne Long

**Agent Email:** dlong@halenhomes.com