

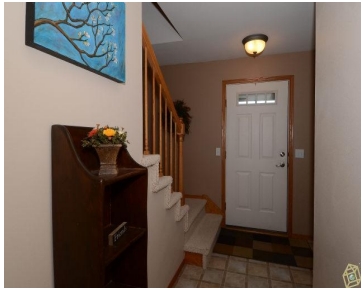
929 EAGLE CREST DRIVE, MADISON, WI, 53704

https://www.adashunjones.com

929 EAGLE CREST
Drive, Madison, WI,
53704



\$209,900



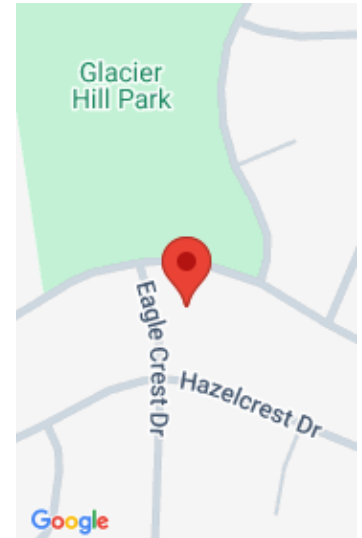
Neat & tidy, move-in condition in a fabulous neighborhood. Inviting front porch! Lg. bright kitchen inc. plenty of counter space, cabinets pantry. Master suite w/vaulted ceiling incl private bath & walk-in closet. Dinette opens up to lg deck! Updated basement w/family room. Large fenced flat yard incl perennials & garden beds. Quiet adjacent to Glacier...

- 3 beds
- 2 baths
- Res
- Sold
- 1720 sq ft



Laurie Zoerb

Stark Company, REALTORS



Features

GarageYN: Yes

FireplaceYN: No

Utilities: Cable Available

AttachedGarageYN: Yes

PoolPrivateYN: No

Features: Cable Available,Dryer,Kitchen Island,Lower Level,Vaulted Ceiling(s),Walk-in Closet(s),Washer,Water softener RENTED

Above Grade Finished Area, sq ft: 1456

Below Grade Finished Area, sq ft: 264

Tax Year: 2011

Tax Amount: 4726

Amenities

Waterfront available: No

Cooling:
Central Air

Amenities: Dishwasher,Disposal,Dryer,ENERGY STAR Qualified Appliances,Microwave,Range,Refrigerator,Washer,Water Softener Rented

Water Source: Public

Sewer: Public Sewer

Building Details

NewConstructionYN: No

Heating: Forced Air, Natural Gas

Basement: Finished,Full

Exterior material: Brick,Stone,Vinyl Siding

Parking: Attached,Garage Door Opener,Paved

Agent Details

Agent Full Name: Laurie Zoerb

Agent Email: Lauriezoerb@gmail.com