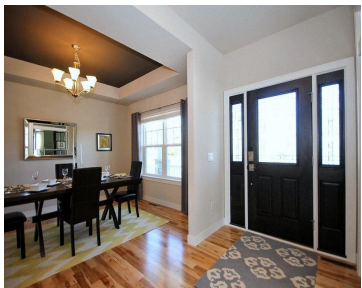
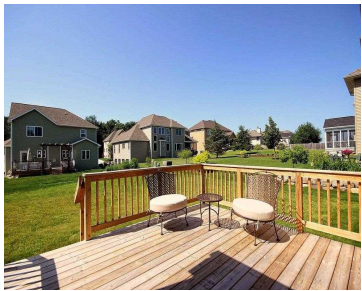
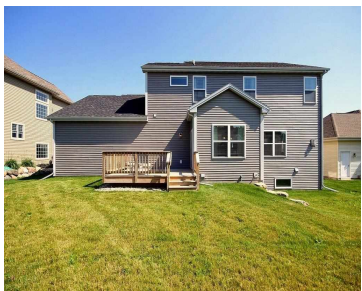


9205 SILVERSTONE LANE, MADISON, WI, 53593

https://www.adashunjones.com

9205 Silverstone
Lane, Madison, WI,
53593



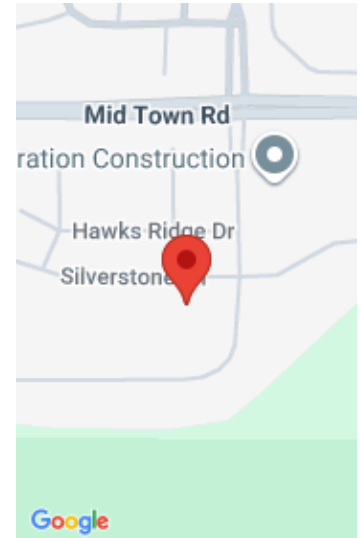
\$424,900

Model home in coveted Hawk's Ridge Estates available for immediate move-in! This home offers you all the space you crave. Formal dining and study w/ French doors open to living room w/ gorgeous stone fireplace. Family cook will adore the generous storage, maple cabinetry, solid surface countertops & upgraded stainless appliances. 2nd floor offers 4...

- 4 beds
- 2 baths
- SR-C1
- Sold
- 2417 sq ft



D'anne Long
Tim O'Brien Homes LLC



Features

GarageYN: Yes

FireplaceYN: Yes

Utilities: Cable Available

Above Grade Finished Area, sq ft: 2417

Tax Amount: 1592

AttachedGarageYN: Yes

PoolPrivateYN: No

Features: Breakfast Bar,Cable Available,Gas,Pantry,Upper Level,Walk-in Closet(s)

Tax Year: 2013

Inclusions: All window coverings

Amenities

Waterfront available: No

Amenities: Dishwasher,Disposal,ENERGY STAR Qualified Appliances,Microwave,Range,Refrigerator

Sewer: Public Sewer

Cooling: Central Air

Water Source: Public

Building Details

NewConstructionYN: No

Basement: Bath/Stubbed,Full,Sump Pump

Parking: Attached,Garage Door Opener,Paved

Heating: Forced Air, Natural Gas

Exterior material: Brick,Stone,Vinyl Siding

Agent Details

Agent Full Name: D'anne Long

Agent Email: dlong@halenhomes.com