

910 SWALLOWTAIL DRIVE, MADISON, WI, 53717

https://www.adashunjones.com

910 SWALLOWTAIL
Drive, Madison, WI,
53717

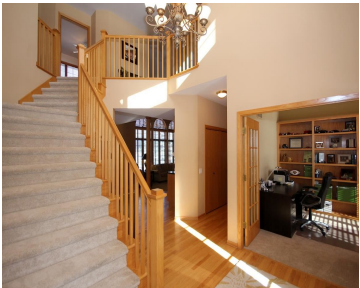
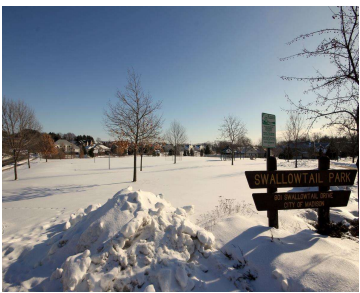


\$524,900

This is you...entertaining in elegance! Across from big beautiful Park! Grand foyer & staircase, double french doors, shiny hardwood floors continue thru gourmet kitchen w/granite counters, loads of cabinets & sun. Formal dining, 4 bedrooms up w/ comfortable reading area loft. Not all homes are blessed with a dramatic focal feature like this one; stunning...



Trish Schaefer
American, REALTORS



- 5 beds
- 3 baths
- SR-C1
- Sold
- 4338 sq ft



Features

GarageYN: Yes

FireplaceYN: Yes

Utilities: Cable Available

AttachedGarageYN: Yes

PoolPrivateYN: No

Features: Accessible Bedroom,Breakfast Bar,Cable Available,Dryer,Gas,Jetted bathtub,Main Level,Pantry,Vaulted Ceiling(s),Walk-in Closet(s),Washer,Water softener inc,Wet Bar,Wood Burning

Above Grade Finished Area, sq ft: 3088

Below Grade Finished Area, sq ft: 1250

Tax Year: 2013

Tax Amount: 10732

Inclusions: Humidifier,All window coverings

Amenities

Waterfront available: No

Cooling:
Central Air

Amenities: Dishwasher,Disposal,Dryer,ENERGY STAR Qualified Appliances,Microwave,Range,Refrigerator,Washer,Water Softener Owned

Water Source: Public

Sewer: Public Sewer

Building Details

NewConstructionYN: No

Heating: Forced Air, Natural Gas

Basement: Finished,Full,Full Size Windows/Exposed,Partially Finished,Sump Pump

Exterior material:
Brick,Stone,Vinyl Siding

Parking: Attached,Paved

Agent Details

Agent Full Name: Trish Schaefer

Agent Email: trish.schaef@gmail.com