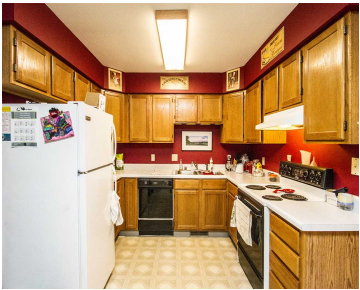
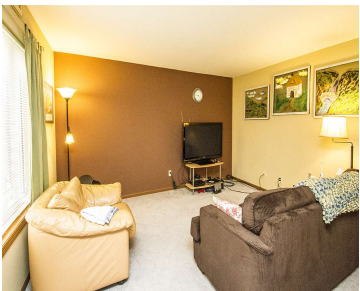


905 WHISPERING WAY, WI, 53527

https://www.adashunjones.com

905 Whispering Way, WI, 53527



2 bedroom 1.5 bath townhouse condo located on a quiet cul du sac. Full bath and bedrooms on the upper level with kitchen, living room and 1/5 bath located on the main level. Lower level is partially finished with the beginning stages already prepared for you. Attached 1 car garage with an additional parking space....

- 2 beds
- 1 bath
- Condominium,Res
- Sold
- 1170 sq ft



Kimberly Colby
Century 21 Affiliated



Features

GarageYN: Yes

FireplaceYN: No

Utilities: Cable Available

Above Grade Finished Area, sq ft: 1170

Tax Amount: 2052

AttachedGarageYN: Yes

PoolPrivateYN: No

Features: Lower Level,Pantry

Tax Year: 2014

Inclusions: Some Window Coverings

Amenities

Waterfront available: No

Amenities: Dishwasher,Disposal,Dryer,Range,Refrigerator,Washer,Water Softener Owned

Sewer: Public Sewer

Cooling:
Central Air

Water Source: Public

Building Details

NewConstructionYN: No

Basement: Full,Partially Finished

Parking: Assigned,Attached,Garage,Garage Door Opener

Heating: Forced Air, Natural Gas

Exterior material: Brick,Stone,Vinyl Siding

Agent Details

Agent Full Name: Kimberly Colby

Agent Email: Kim@kimcolbyhomes.com