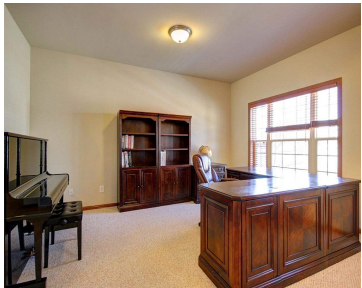
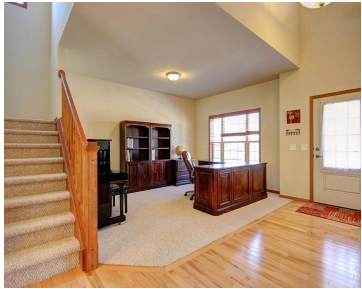
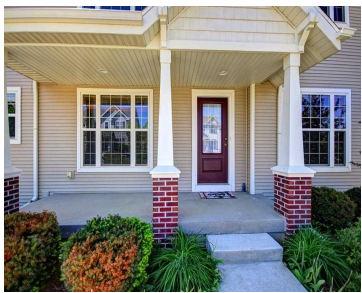


9025 PINE HOLLOW PLACE, MADISON, WI, 53593

https://www.adashunjones.com

9025 Pine Hollow
Place, Madison, WI,
53593



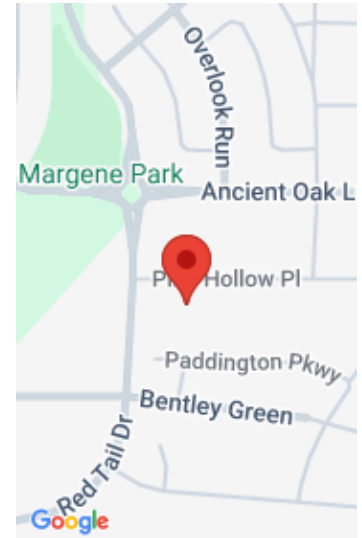
\$329,900

Welcome home to Linden Park...splendid West Madison 2 story home. Located across the street to Olson Elementary school. Easy commute to Verona and Epic. Features include: huge mud room, fireplace in family room, versatile floor plan, huge walk-in pantry, 9ft ceilings on 1st and lower level, LL has exposure and ready for future finish, maple wood...

- 4 beds
- 2 baths
- Res
- Sold
- 2706 sq ft



Ronda Thompson
Pinnacle Real Estate Group LLC



Features

GarageYN: Yes

FireplaceYN: No

Lot Features: Subdivided

Features: Breakfast Bar,Cable Available,Gas,Kitchen Island,Main Level,Pantry,Walk-in Closet(s),Water softener inc

Tax Year: 2012

Inclusions: Some Window Coverings

AttachedGarageYN: Yes

PoolPrivateYN: No

Utilities: Cable Available

Above Grade Finished Area, sq ft: 2706

Tax Amount: 7969

Amenities

Waterfront available: No

Cooling: Central Air

Amenities: Dishwasher,Disposal,Range,Refrigerator,Water Softener Owned

Water Source: Public

Sewer: Public Sewer

Building Details

NewConstructionYN: No

Heating: Forced Air, Natural Gas

Basement: Bath/Stubbed,Full,Full Size Windows/Exposed

Exterior material: Brick,Stone,Vinyl Siding

Parking: Attached,Garage Door Opener,Paved

Agent Details

Agent Full Name: Ronda Thompson

Agent Email: movewithronda@gmail.com