

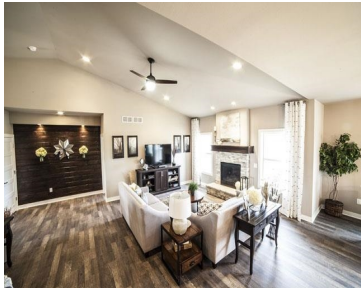
858 ALPINE PARKWAY, OREGON, WI, 53575

<https://www.adashunjones.com>

858 Alpine Parkway, Oregon, WI, 53575



\$419,900

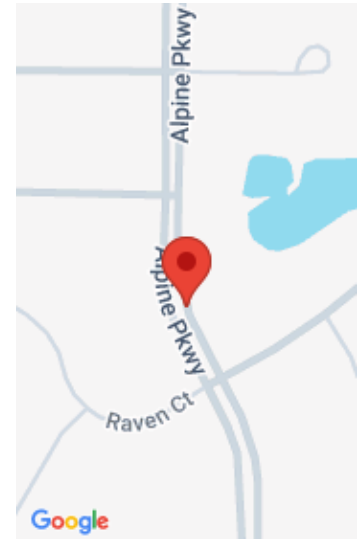


Encore Construction’s 2014 Parade Home is a ranch featuring 3 bedrooms, 2 full baths, and an exposed lower level plumbed for an additional future bath and additional living space! Master bath features free standing tub and separate tile shower. Open kitchen, dining and living room will make entertaining a breeze. Large mud room features cubbies...

- 3 beds
- 2 baths
- Res
- Sold
- 2023 sq ft



Cari Wuebben
Encore Real Estate Services, I



Features

GarageYN: Yes

AttachedGarageYN: Yes

FireplaceYN: Yes

PoolPrivateYN: No

Utilities: Cable Available

Features: Accessible Bedroom, Accessible Full Bath, Cable Available, Gas, Kitchen Island, Main Level, Pantry, Vaulted Ceiling(s), Walk-in Closet(s), Water softener inc

Above Grade Finished Area, sq ft: 2023

Tax Year: 2013

Tax Amount: 182

Inclusions: Some Window Coverings

Amenities

Waterfront available: No

Cooling: Central Air

Amenities: Dishwasher, Disposal, ENERGY STAR Qualified Appliances, Microwave, Range, Refrigerator, Water Softener Owned

Water Source: Public

Sewer: Public Sewer

Building Details

NewConstructionYN: No

Heating: Forced Air, Natural Gas

Basement: Bath/Stubbed, Full, Full Size Windows/Exposed, Sump Pump

Exterior material: Pressed board, Stucco

Parking: Attached, Garage Door Opener, Paved

Agent Details

Agent Full Name: Cari Wuebben

Agent Email: cari.wuebben@encorehomesinc.com