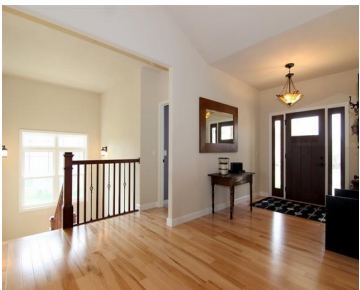


835 AUGUSTA DRIVE, OREGON, WI, 53575

<https://www.adashunjones.com>

835 Augusta Drive,
Oregon, WI, 53575

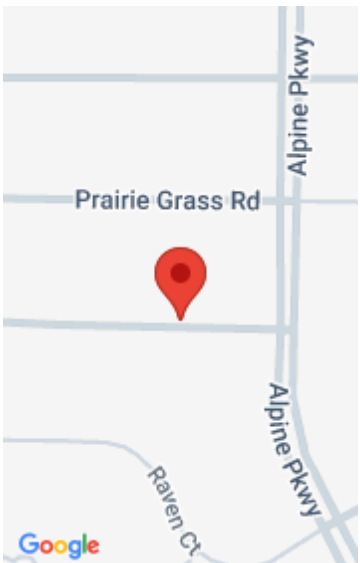


Nearly new ranch w/ completely open plan & exposed (12 Pella windows) lower level w/ a view of the course in The Legend at Bergamont golf/waterpark community. 4-5 bdrms (6th could be added). Kitchen: granite, SS appls & walk in Pantry. Master: tray ceiling, built-ins, stone/tile/glass shower w/ dual heads, jetted tub. Geothermal hvac=low utility...

- 5 beds
- 3 baths
- Res
- Sold
- 4187 sq ft



Tim Krueger
RE/MAX Preferred



Features

GarageYN: Yes

AttachedGarageYN: Yes

FireplaceYN: No

PoolPrivateYN: No

Utilities: Cable Available

Features: Accessible Bedroom, Accessible Doors, Accessible Full Bath, Accessible Hallway(s), Breakfast Bar, Cable Available, Gas, Jetted bathtub, Kitchen Island, Main Level, Pantry, Vaulted Ceiling(s), Walk-in Closet(s), Water softener inc

Above Grade Finished Area, sq ft: 2416

Below Grade Finished Area, sq ft: 1771

Tax Year: 2012

Tax Amount: 9709

Amenities

Waterfront available: No

Water Body Name: n/a

Cooling: Central Air, Geothermal

Amenities: Dishwasher, Disposal, Microwave, Range, Refrigerator, Water Softener Owned

Water Source: Public

Sewer: Public Sewer

Building Details

NewConstructionYN: No

Heating: Forced Air, Geothermal, Natural Gas

Basement: Finished, Full, Full Size Windows/Exposed, Partially Finished, Sump Pump

Exterior material: Brick, Pressed board, Stone, Stucco, Vinyl Siding

Parking: Attached, Garage Door Opener, Paved

Agent Details

Agent Full Name: Tim Krueger

Agent Email: Tim@PreferredHomesTeam.com