

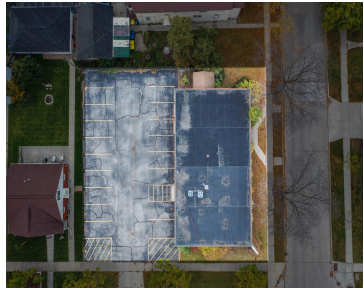
828 CHERRY STREET, GREEN BAY, WI, 54301-4840

<https://www.adashunjones.com>

828 CHERRY Street,
GREEN BAY, WI,
54301-4840



\$299,000

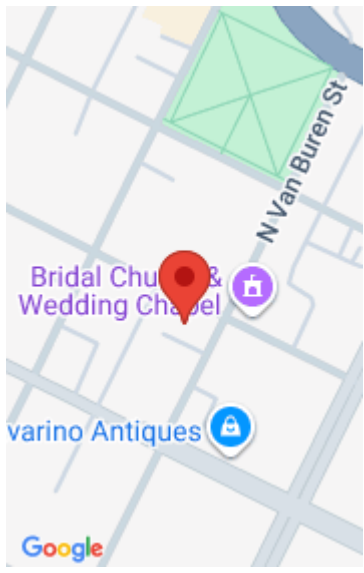


Back on Market Buyer Financing fell apart - Presenting an exceptional 6,300 square foot office building ideally situated on a prominent corner lot in downtown Green Bay. This meticulously maintained property features an attractive all-brick exterior, upgraded LED lighting throughout, and excellent visibility enhanced by a prominent monument sign. The flexible floor plan accommodates both...

• 6300 sq ft



Greg
Dallaire Realty



Features

Price per sq ft: \$47.46

Area, sq ft: 6,300 sq ft

Lot Size, acres: 0.29

For Sale or Rent: For Sale

GarageYN: No

Heating: Forced Air, Varies by Unit, Zoned

FireplaceYN: No

Features: Building Sign, Offices

Sewer: Public Sewer

Floors: 1 floor

Lot size, sq ft: 12807 acres

Year built: 1968

Parcel Number: 10-74

AttachedGarageYN: No

Cooling: Central Air

PoolPrivateYN: No

Water Source: Public

Tax Amount: \$5,662.52

Building Details

NewConstructionYN: No

Exterior Material: Brick, Metal Siding

Basement: Full

Parking: On Site, Paved

Agent Details

Agent Full Name: Greg L. Dallaire

Agent Email: greg@dallairerealty.com