

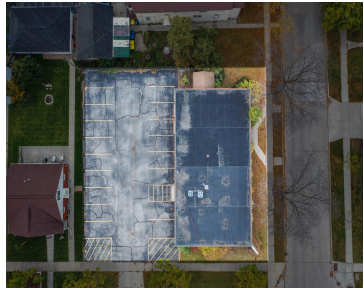
# 828 CHERRY STREET, GREEN BAY, WI, 54301-4840

<https://www.adashunjones.com>

828 CHERRY Street,  
GREEN BAY, WI,  
54301-4840



**\$299,900**



Presenting an exceptional 6,300 square foot office building ideally situated on a prominent corner lot in downtown Green Bay. This meticulously maintained property features an attractive all-brick exterior, upgraded LED lighting throughout, and excellent visibility enhanced by a prominent monument sign. The flexible floor plan accommodates both single and multi-tenant configurations, offering a range of...

• 6300 sq ft



**Greg**  
Dallaire Realty



---

## Features

**Price per sq ft:** \$47.60

**Area, sq ft:** 6,300 sq ft

**Lot Size, acres:** 0.29

**For Sale or Rent:** For Sale

**GarageYN:** No

**Heating:** Forced Air, Varies by Unit, Zoned

**FireplaceYN:** No

**Features:** Building Sign, Offices

**Sewer:** Public Sewer

**Floors:** 1 floor

**Lot size, sq ft:** 12807 acres

**Year built:** 1968

**Parcel Number:** 10-74

**AttachedGarageYN:** No

**Cooling:** Central Air

**PoolPrivateYN:** No

**Water Source:** Public

**Tax Amount:** \$5,662.52

---

## Building Details

**NewConstructionYN:** No

**Exterior Material:** Brick, Metal Siding

**Basement:** Full

**Parking:** On Site, Paved

---

## Agent Details

**Agent Full Name:** Greg L Dallaire

**Agent Email:** greg@dallairerealty.com