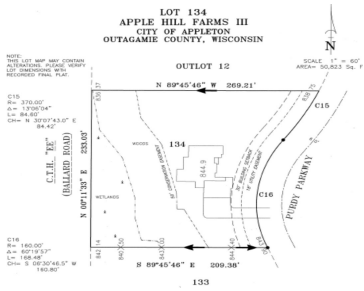


7489 PURDY PARKWAY 134, APPLETON, WI, 54913

https://www.adashunjones.com

7489 PURDY
Parkway 134,
Appleton, WI,
54913



This 1.17-acre lot, located in the enchanting Apple Hill Farms Subdivision on the north side of Appleton, is the perfect spot for your next home. Its convenient location provides easy access to schools, restaurants, highways, and the Apple Creek YMCA nature preserve. With Restrictive Covenants in place to protect your investment, you can rest assured...

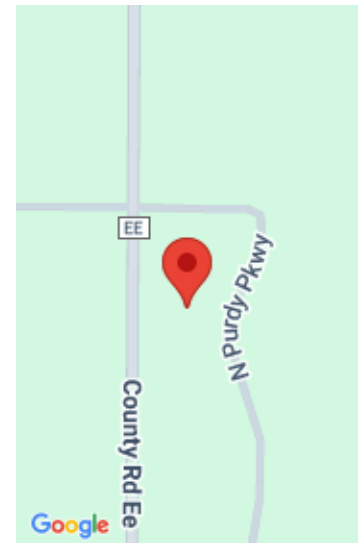
- Land
- Residential, Vacant Land/Acreage
- Active



Danielle
Coldwell Banker Real Estate Group



Bruce
Coldwell Banker Real Estate Group



Features

GarageYN: No **AttachedGarageYN:** No
FireplaceYN: No **PoolPrivateYN:** No
Lot Features: Suburb **Utilities:** All Underground, Cable Available, Electricity Available, Gas
Tax Amount: 971.12

Amenities

Waterfront available: No **Water Source:** Municipal/City
Sewer: Municipal Sewer

Building Details

NewConstructionYN: No

Agent Details

Agent Full Name: Danielle M Hart **Agent Email:** dhart@coldwellhomes.com