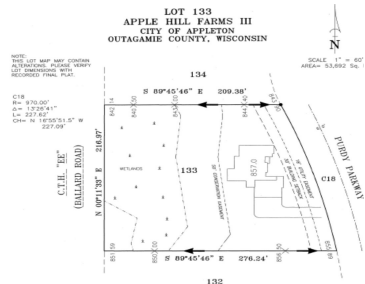


7483 PURDY PARKWAY 133, APPLETON, WI, 54913

https://www.adashunjones.com

7483 PURDY
Parkway 133,
Appleton, WI,
54913



This 1.23-acre lot, situated in the picturesque Apple Hill Farms Subdivision on the north side of Appleton, is eagerly awaiting your dream home. With its convenient location near schools, restaurants, highways, and the Apple Creek YMCA nature preserve, you'll have easy access to everything you need. Your investment will also be safeguarded by Restrictive Covenants....

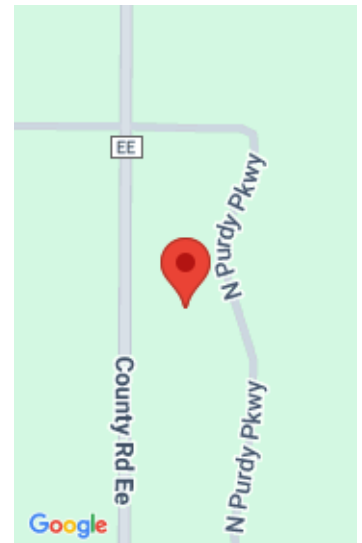
- Land
- Residential,Vacant Land/Acreage
- Active



Danielle
Coldwell Banker Real Estate Group



Bruce
Coldwell Banker Real Estate Group



Features

GarageYN: No **AttachedGarageYN:** No
FireplaceYN: No **PoolPrivateYN:** No
Lot Features: Suburb **Utilities:** All Underground, Cable Available, Electricity Available, Gas
Tax Amount: 795.76

Amenities

Waterfront available: No **Water Source:** Municipal/City
Sewer: Municipal Sewer

Building Details

NewConstructionYN: No

Agent Details

Agent Full Name: Danielle M Hart **Agent Email:** dhart@coldwellhomes.com