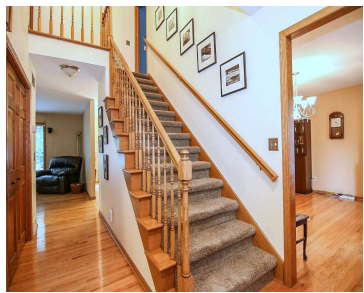


7422 NEW WASHBURN WAY, MADISON, WI, 53719

https://www.adashunjones.com

7422 NEW
WASHBURN Way,
Madison, WI, 53719



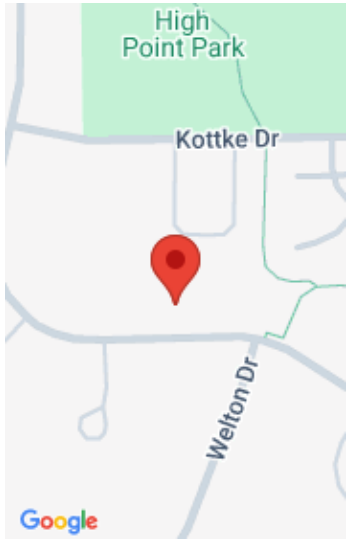
\$379,900

No Showings until Wed 6/17/15. Remarkable value right in the heart of High Point Estates. Stately home features bright open kitchen w/ large island & SS appliances, large family room with gas fireplace, formal dining, main level office w/ quality built ins, large master suite with full bath & spacious walk in closet, finished lower...

- 3 beds
- 3 baths
- R1
- Sold
- 3388 sq ft



Joe Marks
Realty Executives Cooper Spransy



Features

GarageYN: Yes

AttachedGarageYN: Yes

FireplaceYN: No

PoolPrivateYN: No

Security Features: Security System

Features: Breakfast Bar,Dryer,Gas,Jettied bathtub,Kitchen Island,Main Level,Security System,Walk-in Closet(s),Washer,Water softener inc,Wet Bar

Above Grade Finished Area, sq ft: 2496

Below Grade Finished Area, sq ft: 892

Tax Year: 2014

Tax Amount: 8628

Inclusions: All window coverings

Amenities

Waterfront available: No

Cooling:
Central Air

Amenities:

Dishwasher,Disposal,Dryer,Freezer,Microwave,Range,Refrigerator,Washer,Water Softener Owned

Water Source:
Public

Sewer: Public Sewer

Building Details

NewConstructionYN: No

Heating: Forced Air, Natural Gas

Basement: Finished,Full,Sump Pump

Exterior material: Brick,Stone,Vinyl Siding

Parking: Attached,Paved

Agent Details

Agent Full Name: Joe Marks

Agent Email: joemarks@realtyexecutives.com