

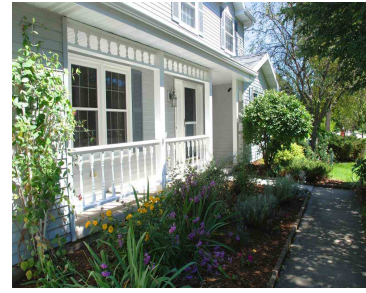
7322
LONGMEADOW
Road, Madison, WI,
53717

7322 LONGMEADOW ROAD, MADISON, WI, 53717

<https://www.adashunjones.com>



\$349,900

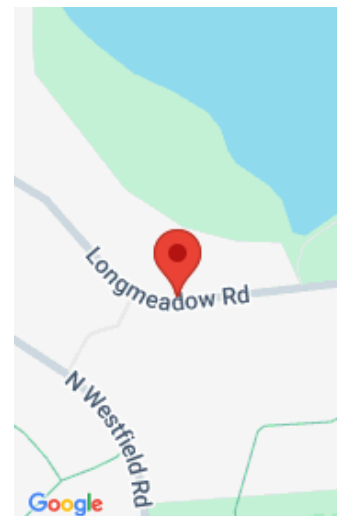


This beautiful home & rare opportunity sits on an "isthmus" between 2 parks in 1 of Madison's most desirable locations. The backyard sanctuary backs to Stricker's Woods/Park/Pond. A short walk across the street to Sprawling Wexford Park. Hiking trails & wildlife abound. Details everywhere. Custom stained glass & maple cabinets. LL finishing, Furnace, A/C, H2O...

- 4 beds
- 2 baths
- PD
- Sold
- 2675 sq ft



Gene Van Buren
Restaino & Associates



Features

GarageYN: Yes

FireplaceYN: No

Utilities: Cable Available

Above Grade Finished Area, sq ft:
2098

Tax Year: 2013

Inclusions: All window coverings

AttachedGarageYN: Yes

PoolPrivateYN: No

Features: Cable Available,Dryer,Kitchen Island,Main Level,Washer,Water softener inc,Wood Burning

Below Grade Finished Area, sq ft: 577

Tax Amount: 7706

Amenities

Waterfront available: No

Amenities:

Dishwasher,Disposal,Dryer,Microwave,Range,Refrigerator,Washer,Water Softener Owned

Sewer: Public Sewer

Cooling:
Central Air

Water Source:
Public

Building Details

NewConstructionYN: No

Basement: Full,Partially Finished

Heating: Forced Air, Natural Gas

Parking: Attached,Garage Door Opener,Paved

Agent Details

Agent Full Name: Gene Van Buren

Agent Email: gvb@genevanburen.com