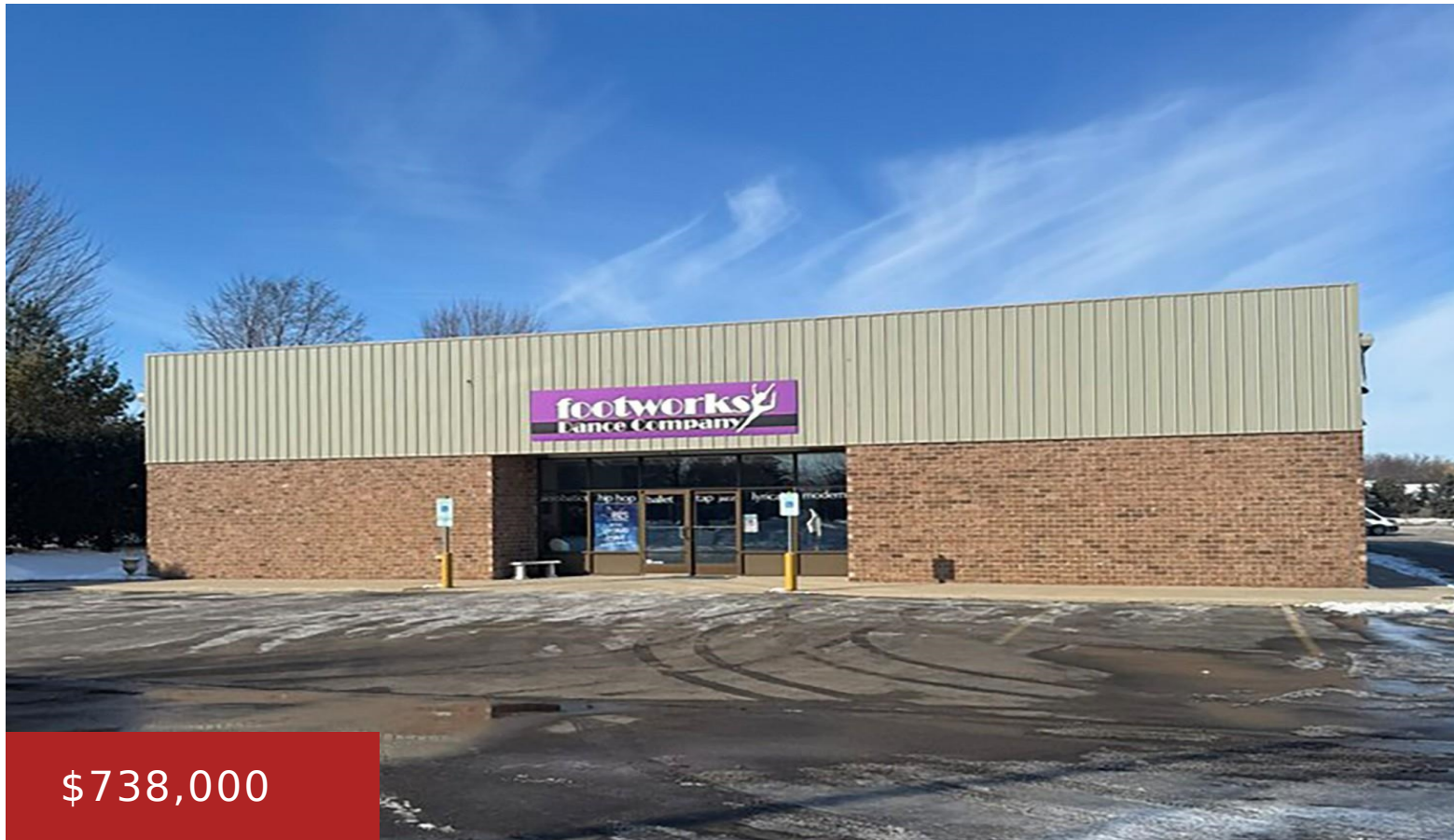


728 SCHELFHOUT LANE, KIMBERLY, WI, 54136

https://www.adashunjones.com

728 SCHELFHOUT
Lane, KIMBERLY,
WI, 54136



Investment opportunity. Great place to start or expand your business. Great location right across from Kimberly High School and Kwik Trip. Highly visible and a lot of local traffic.



Alex
First Weber, Realtors, Oshkosh

- Commercial Sale
- COMMERCIAL,Real Estate
- Closed
- 9292 sq ft



Features

GarageYN: No

FireplaceYN: No

Tax Amount: 9677

AttachedGarageYN: No

PoolPrivateYN: No

Amenities

Waterfront available: No

Water Source: Public

Cooling: Central Air

Sewer: Public Sewer

Building Details

NewConstructionYN: No

Heating: Forced Air

Exterior material: Aluminum
Siding,Aluminum/Steel,Block,Brick,Steel Frame

ParkingTotal: 40

Basement: None

Parking: On Site,Paved

Agent Details

Agent Full Name: Alex J Oberthaler

Agent Email: alex.oberthaler@firstweber.com