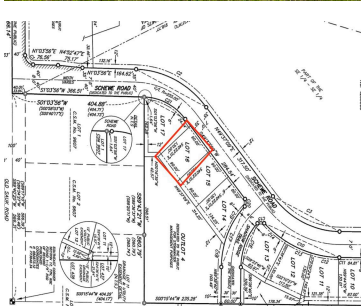


725 SCHEWE ROAD, MADISON, WI, 53562

https://www.adashunjones.com

725 Schewe Road,
Madison, WI, 53562



One of the last remaining lots in Pope Farm Estates. This walkout lot is along the Western edge of Madison offers a premier place to build a custom home. Located within the Middleton Cross-Plains School District. This highly coveted location places you within walking distance of the newly built Pope Farm Elementary School. As well...

- Single family
- Active



Alden Cleary
Jason Thomas Homes LLC



Features

GarageYN: No

FireplaceYN: No

Utilities: Natural Gas Available, Electricity Available

Tax Amount: 3953

AttachedGarageYN: No

PoolPrivateYN: No

Tax Year: 2024

Amenities

Waterfront available: No **Water Source:** Municipal water available, Laterals to lot line

Sewer: Public Sewer

Building Details

NewConstructionYN: No

Agent Details

Agent Full Name: Alden Cleary

Agent Email: Alden@jasonthomashomes.com