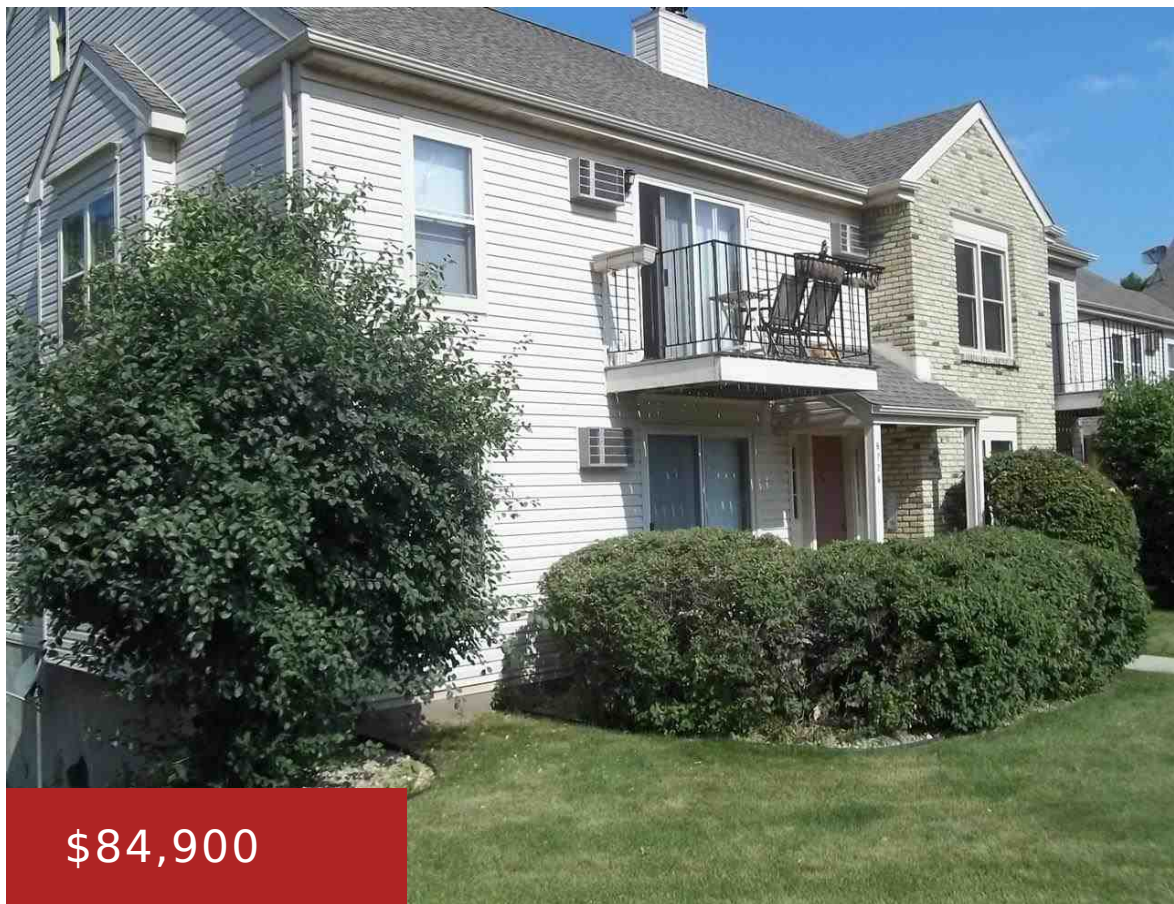


6726 PARK RIDGE DRIVE, WI, 53719

<https://www.adashunjones.com>

6726 Park Ridge
Drive, WI, 53719



\$84,900



This two bedroom first floor unit has it all. Two full baths, deep two car tandem garage, woodburning fireplace and private in-unit laundry. This end unit has windows on three sides. New laminate flooring in living room and dining room. Newer kitchen flooring and most appliances are newer. Association recently replaced roofs, siding and water...

- 2 beds
- 2 baths
- Condominium,PD
- Sold
- 901 sq ft



John Weber
First Weber Inc



Features

GarageYN: Yes

FireplaceYN: Yes

Lot Features: Near Public Transit

Features: Accessible Bedroom, Accessible Full Bath, Main Level, Walk-in Closet(s), Wood Burning

Tax Year: 2013

Inclusions: All window coverings

AttachedGarageYN: No

PoolPrivateYN: No

Utilities: Cable Available

Above Grade Finished Area, sq ft: 901

Tax Amount: 1844

Amenities

Waterfront available: No **Amenities:** Dishwasher, Disposal, Dryer, Range, Refrigerator, Washer

Water Source: Public **Sewer:** Public Sewer

Building Details

NewConstructionYN: No **Heating:** Radiant, Electric

Exterior material: Vinyl Siding **Parking:** Garage, Garage Door Opener, Tandem, Underground

Agent Details

Agent Full Name: John Weber

Agent Email: weberjohn@firstweber.com