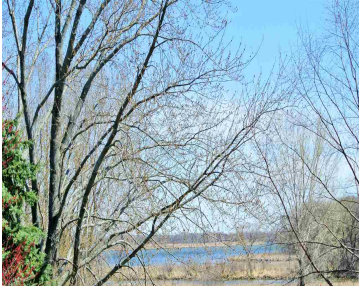


6613 MEREDITH WAY, MCFARLAND, WI, 53558

https://www.adashunjones.com

6613 MEREDITH
Way, McFarland,
WI, 53558

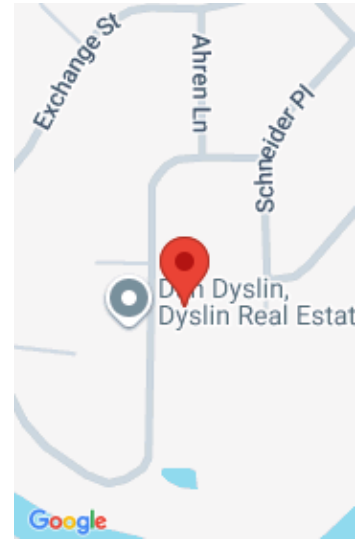


SPECTACULAR Views across the Yahara Riverway sitting on top of McFarland! CUSTOM BUILT 4 bed, 3.5 bath with HUGE backyard and wonderful Screened Room (and Raised Deck) overlooking the Nature. This one is a true pleasure to view and is MOVE-IN Ready! All the Amenities you expect, Topline SS Appls, Beautiful Stone FP, Easy access...

- 4 beds
- 3 baths
- Res
- Sold
- 2810 sq ft



Jeff Schraml
Century 21 Affiliated



Features

GarageYN: Yes

FireplaceYN: Yes

Utilities: Cable Available

AttachedGarageYN: Yes

PoolPrivateYN: No

Features: Breakfast Bar,Cable Available,Dryer,Gas,Jetted bathtub,Kitchen Island,Main Level,Pantry,Vaulted Ceiling(s),Walk-in Closet(s),Washer,Water softener inc

Above Grade Finished Area, sq ft: 1966

Below Grade Finished Area, sq ft: 844

Tax Year: 2014

Tax Amount: 7383

Inclusions: All window coverings,Play Structure

Amenities

Waterfront available:

Lake, River Front

Water Body Name: YAHARA

Cooling:
Central Air

Amenities:

Dishwasher,Disposal,Dryer,Microwave,Range,Refrigerator,Washer,Water Softener Owned

Water Source: Public
Sewer: Public Sewer

Building Details

NewConstructionYN: No

Heating: Forced Air, Natural Gas

Basement: Finished,Full,Full Size Windows/Exposed,Walk-Out Access

Exterior material:
Brick,Stone,Vinyl Siding

Parking: Attached,Garage Door Opener,Paved

Agent Details

Agent Full Name: Jeff Schraml

Agent Email: jschraml@c21affiliated.com