

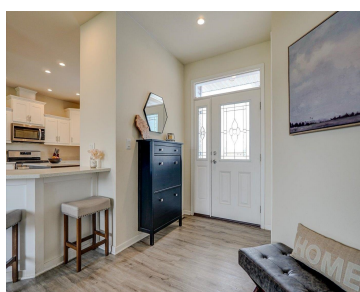
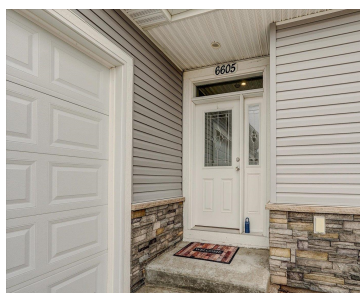
6605 WARNER FARM DRIVE, WINDSOR, WI, 53532

<https://www.adashunjones.com>

6605 Warner Farm Drive, Windsor, WI, 53532



\$524,900

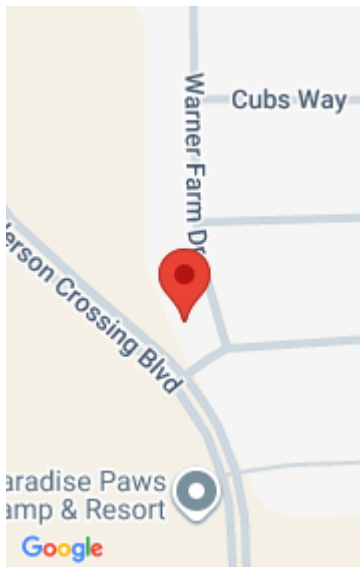


Now Offered at a New Price! Discover incredible value in this beautiful 4-bed, 2-bath ranch in Bear Tree Farms, set on nearly 1/2 acre. This open-concept home features a sleek modern kitchen with quartz countertops, stainless steel appliances, and durable LVP flooring throughout the main level. The bright living room is filled with natural light...

• 2267 sq ft



Amber Huemmer
LPT Realty



Features

Days on Market: 287

Lot Size, acres: 0.46

View: Park/Greenbelt

Garage Spaces: 2

Parcel Number: 0910-283-6136-1

AttachedGarageYN: Yes

Cooling: Central Air

PoolPrivateYN: No

Utilities: Cable Available

Amenities: Dishwasher, Dryer, Microwave, Range, Refrigerator, Washer, Water Softener Owned

Below Grade Finished Area, sq ft: 587

Tax Year: 2023

Tax Amount: \$6,599

Area, sq ft: 2,267 sq ft

Year built: 2021

Subdivision Name: Bear Tree Farms

Association Fee: 100

GarageYN: Yes

Heating: Forced Air, Natural Gas

FireplaceYN: Yes

Lot Features: Corner Lot

Features: Accessible Bedroom, Accessible Full Bath, Breakfast Bar, Cable Available, Dryer, Gas, Main Level, Pantry, Walk-in Closet(s), Washer, Water softener inc

Above Grade Finished Area, sq ft: 1680

Water Source: Public

Sewer: Public Sewer

Building Details

NewConstructionYN: No

Basement: Bath/Stubbed,Concrete,Full,Full Size Windows/Exposed,Partially Finished

Exterior Material: Stone, Vinyl Siding

Parking: Attached, Garage Door Opener, Paved

Agent Details

Agent Full Name: Amber Huemmer

Agent Email: Amber@thhtrealty.com