

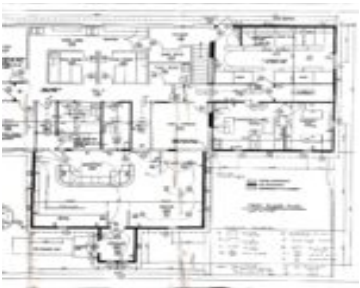
645 HAWTHORNE DRIVE, OMRO, WI, 54963

<https://www.adashunjones.com>

645 HAWTHORNE Drive, OMRO, WI, 54963



\$340,000



This 3,100 sq. ft. commercial property, formerly a vet clinic, offers endless possibilities for future businesses. Located just off HWY 116 and HWY 21, it features spacious garage access underneath, a full bathroom in the basement as well as a public bathroom on the main level. The crawl space storage for additional convenience. With ample...

• 3126 sq ft



Andy
Beiser Realty, LLC



Features

Price per sq ft: \$108.77

Lot Size, acres: 0.51

For Sale or Rent: For Sale

GarageYN: No

Heating: Forced Air

FireplaceYN: No

Water Source: Public

Tax Amount: \$6,430

Area, sq ft: 3,126 sq ft

Year built: 1980

Parcel Number: 265-001302

AttachedGarageYN: No

Cooling: Central Air

PoolPrivateYN: No

Sewer: Public Sewer

Building Details

NewConstructionYN: No

Exterior Material: Brick, Vinyl Siding

Basement: Crawl Space, Full

Parking: On Site, Paved

Agent Details

Agent Email: andyb@beiserrealty.com