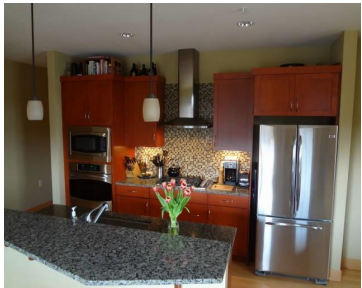
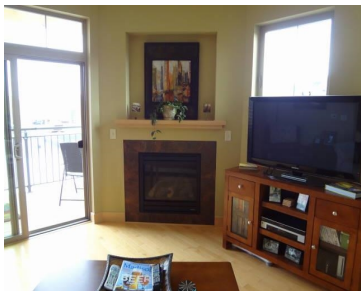
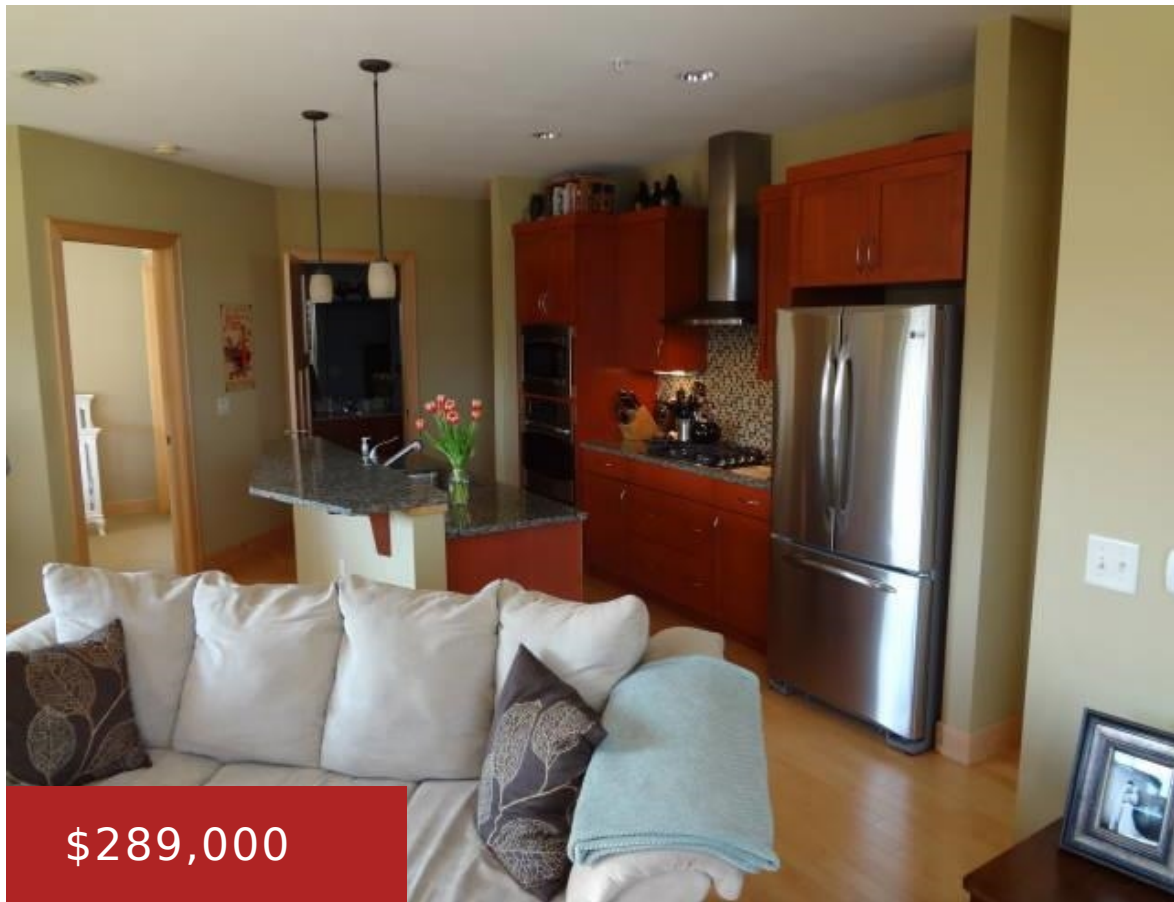


625 MIFFLIN STREET, WI, 53703
https://www.adashunjones.com

625 Mifflin Street,
WI, 53703



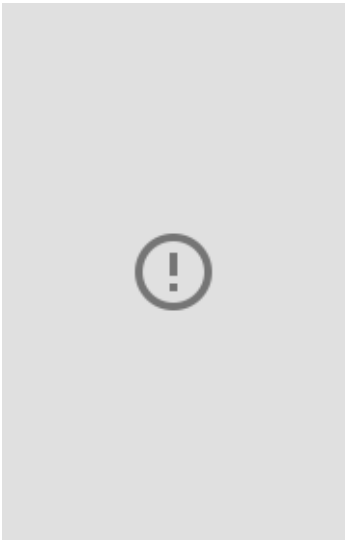
\$289,000

Beautiful upgraded top floor corner unit at The Colony. This condo was spec'd by the owner & features upscale stainless appliances, beautiful cabinetry, light maple floors; 2 bdrm, 2 bath. On the sunny southwest corner, patio has a dome view of the Capitol, so you are always reminded of how close you are to all...

- 2 beds
- 2 baths
- Condominium,PUDSIP
- Sold
- 1047 sq ft



Sheridan Glen
First Weber Inc



Features

GarageYN: Yes

FireplaceYN: No

Lot Features: Near Public Transit

Features: Accessible Bedroom, Accessible Full Bath, Breakfast Bar, Gas, Kitchen Island, Main Level, Walk-in Closet(s)

Tax Year: 2013

AttachedGarageYN: No

PoolPrivateYN: No

Utilities: Cable Available

Above Grade Finished Area, sq ft: 1047

Tax Amount: 6200

Amenities

Waterfront available: No

Cooling: Central Air

Amenities: Dishwasher, Disposal, Dryer, Range, Refrigerator, Washer

Water Source: Public

Sewer: Public Sewer

Building Details

NewConstructionYN: No

Heating: Forced Air, Natural Gas, Electric

Basement: None

Exterior material: Brick, Other, Stone

Parking: Garage, Garage Door Opener, Heated Garage

Agent Details

Agent Full Name: Sheridan Glen

Agent Email: glens@firstweber.com