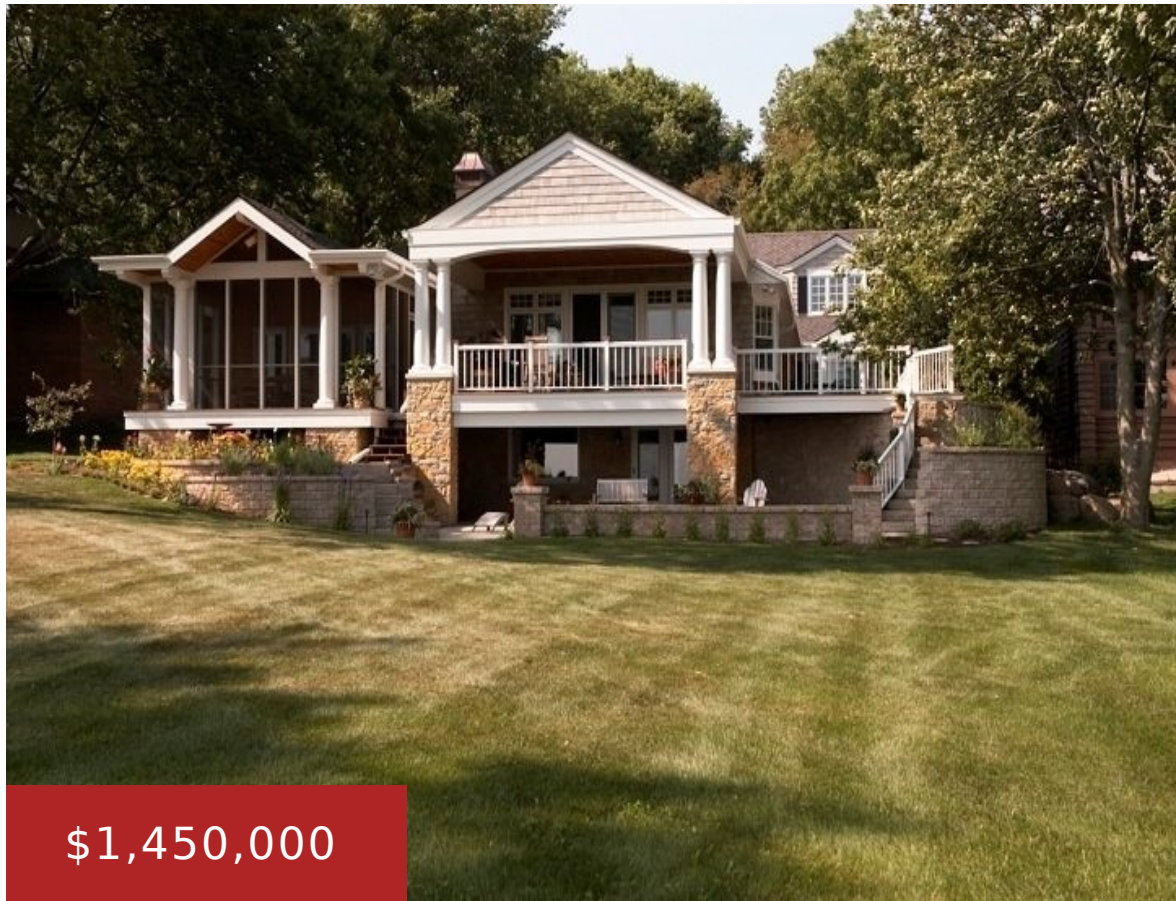


615 FARWELL DRIVE, MAPLE BLUFF, WI, 53704

<https://www.adashunjones.com>

615 FARWELL  
Drive, Maple Bluff,  
WI, 53704



\$1,450,000

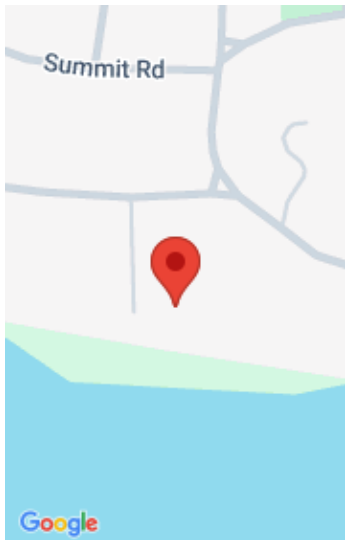


Gorgeous Capital & sunset views across Lake Mendota! Lakeside additions of large wrap around deck & screened-in porch help you enjoy the view. Updated kitchen with double oven & large, low island make for great space to bake, cook & entertain. Enjoy 1 floor living with plenty of other useful spaces. Beautiful flat yard makes...

- 4 beds
- 4 baths
- Res
- Sold
- 5252 sq ft



**Pete Waite**  
Stark Company, REALTORS



---

## Features

**GarageYN:** Yes

**FireplaceYN:** Yes

**Security Features:** Security System

**Lot Features:** Waterfront, Wooded

**Features:** Accessible Bedroom, Accessible Full Bath, Breakfast Bar, Cable Available, Gas, Jetted bathtub, Kitchen Island, Main Level, Security System, Walk-in Closet(s), Washer, Water softener inc, Wood Burning

**Below Grade Finished Area, sq ft:** 1400

**Tax Amount:** 33853

**AttachedGarageYN:** Yes

**PoolPrivateYN:** No

**ExteriorFeatures:** Dock

**Utilities:** Cable Available

**Above Grade Finished Area, sq ft:** 3852

**Tax Year:** 2013

**Inclusions:** All window coverings

---

## Amenities

**Waterfront available:**

Waterfront, 1

**Water Body Name:** Mendota

**Cooling:** Central Air

**Amenities:** Dishwasher, Disposal, Range, Refrigerator, Washer, Water Softener Owned

**Water Source:** Public

**Sewer:** Public Sewer

---

## Building Details

**NewConstructionYN:** No

**Heating:** Forced Air, Natural Gas

**Basement:** Full, Partially Finished, Walk-Out Access

**Exterior material:** Brick, Stone, Wood Siding

**Parking:** Attached, Garage Door Opener, Paved

---

## Agent Details

**Agent Full Name:** Pete Waite

**Agent Email:** pwaite@starkhomes.com