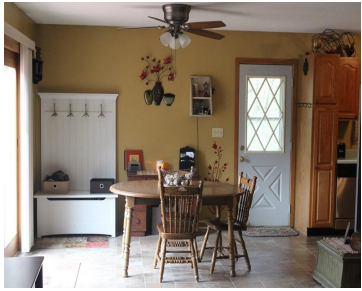


61288 COUNTY ROAD D, EASTMAN, WI, 54626

https://www.adashunjones.com

61288 County Road
D, Eastman, WI,
54626



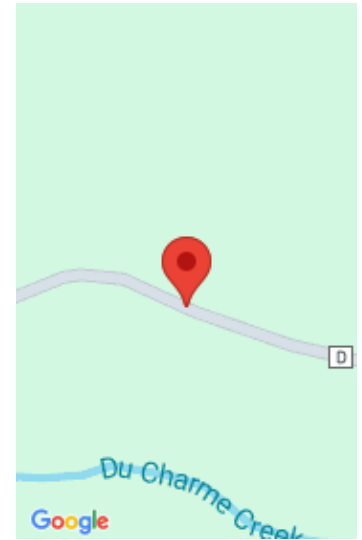
\$179,900

IF YOU HAVE BEEN LOOKING FOR A CUTE HOME NESTLED IN A PRIVATE & PEACEFUL SETTING YET CLOSE TO PRAIRIE DU CHIEN W/ AN EASY COMMUTE TO WORK...WAIT NO LONGER! THIS 3 BDRM, 2 BATH RAISED RANCH HOME SITS ON APPROX. 2 ACRES. HOME FEATURES A SPACIOUS, OPEN LIVING ROOM, LARGE DECK, FULL BASEMENT W/...

- 3 beds
- 2 baths
- Res
- Sold
- 1807 sq ft



Randy Kozelka
RE/MAX Ridge-N-River



Features

GarageYN: No

FireplaceYN: No

Features: Dryer,Main Level,Pantry,Washer

Below Grade Finished Area, sq ft: 575

Tax Amount: 2926

AttachedGarageYN: No

PoolPrivateYN: No

Above Grade Finished Area, sq ft: 1232

Tax Year: 2013

Inclusions: Some Window Coverings

Amenities

Waterfront available: No

Cooling: Central Air

Amenities: Dishwasher,Dryer,Microwave,Range,Refrigerator,Washer

Water Source: Well

Sewer: Private Sewer

Building Details

NewConstructionYN: No

Heating: Forced Air, Propane

Basement: Full,Partially Finished,Walk-Out Access

Exterior material: Vinyl Siding

Parking: Attached,Detached,Garage Door Opener,Unpaved

Agent Details

Agent Full Name: Randy Kozelka

Agent Email: rmkozelka@yahoo.com