

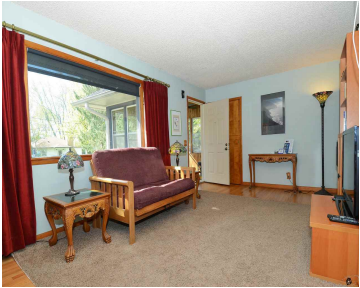
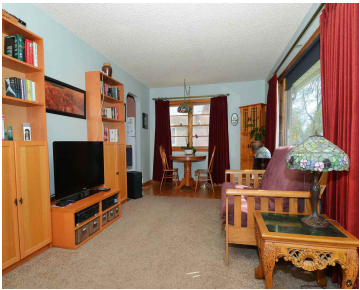
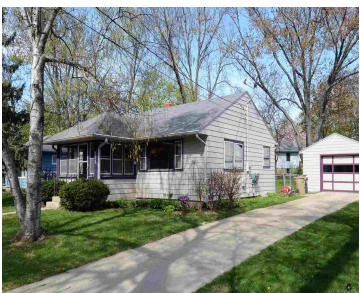
588 GLEN DRIVE, MADISON, WI, 53711

https://www.adashunjones.com

588 Glen Drive,
Madison, WI, 53711



\$214,900



Adorable bungalow in desirable Westmorland neighborhood. Arched doorways, wood floors, three-season front porch, sunny throughout. Bath has newly tiled floor, new sink. Fresh paint in beds and bath. New roof '07, central air, H2O softener included. Laminate wood floor in half of basement. Oversized 13'x21' 1 car garage. Beautiful fully fenced yard w/perennials. Close to parks,...

- 3 beds
- 1 bath
- R2
- Sold
- 864 sq ft



Ann Wenzel
Stark Company, REALTORS



Features

GarageYN: Yes

FireplaceYN: No

Utilities: Cable Available

Above Grade Finished Area, sq ft: 864

Tax Amount: 4478

AttachedGarageYN: No

PoolPrivateYN: No

Features: Accessible Bedroom, Accessible Full Bath, Cable Available, Dryer, Lower Level, Washer, Water softener inc

Tax Year: 2014

Inclusions: Humidifier, Some Window Coverings

Amenities

Waterfront available: No

Amenities: Disposal, Dryer, Range, Refrigerator, Washer, Water Softener Owned

Sewer: Public Sewer

Cooling: Central Air

Water Source: Public

Building Details

NewConstructionYN: No

Basement: Full

Parking: Detached, Garage Door Opener, Paved

Heating: Forced Air, Natural Gas

Exterior material: Vinyl Siding

Agent Details

Agent Full Name: Ann Wenzel

Agent Email: awenzel@starkhomes.com