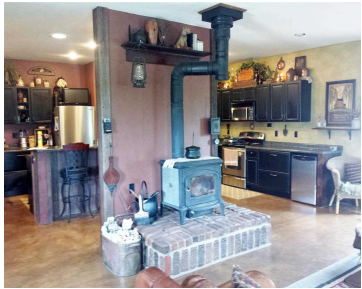
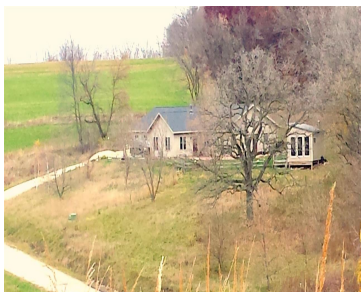


5790 MAPLE GLEN LANE, PLATTEVILLE, WI, 53818

https://www.adashunjones.com

5790 MAPLE GLEN
Lane, Platteville,
WI, 53818

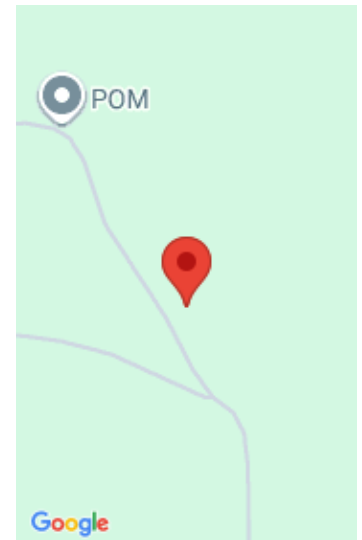


Rural ranch home with in-floor heat is so comfortable you'll get spoiled. Extensive counter space, serving island, pantry, stainless appliances, with rustic trim and decor throughout. Master suite with its own sitting area and even a sauna shack for pampering. Conveniently located on 5 acres, between Platteville and Dubuque with easy access to Hwy 151.

- 4 beds
- 2 baths
- A-2
- Sold
- 2688 sq ft



Gerard Abing
Platteville Realty LLC



Features

GarageYN: Yes

FireplaceYN: No

WindowFeatures: Skylight(s)

Features: Accessible Bedroom, Accessible Doors, Accessible Entrance, Accessible Full Bath, Accessible Hallway(s), Breakfast Bar, Kitchen Island, Main Level, Pantry, Walk-in Closet(s), Water softener inc, Wood Burning, Wood Burning Stove

Tax Year: 2014

Inclusions: Window/Wall AC, Some Window Coverings

AttachedGarageYN: Yes

PoolPrivateYN: No

Lot Features: Wooded

Above Grade Finished Area, sq ft: 2688

Tax Amount: 4513

Amenities

Waterfront available: No

Amenities: Dishwasher, ENERGY STAR Qualified Appliances, Microwave, Range, Refrigerator, Water Softener Owned

Water Source: Well **Sewer:** Private Sewer

Building Details

NewConstructionYN: No

Heating: Heat Pump, Radiant Floor, Electric, Wood

Basement: None

Exterior material: Vinyl Siding

Parking: Attached, Garage Door Opener, Unpaved

Agent Details

Agent Full Name: Gerard Abing

Agent Email: Gerardsell@gmail.com