

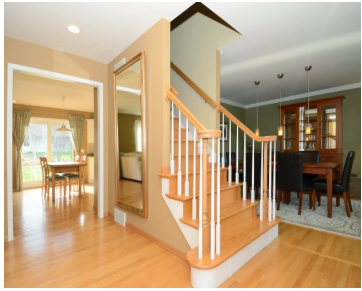
5733 KILKENNY PLACE, FITCHBURG, WI, 53711

https://www.adashunjones.com

5733 KILKENNY
Place, Fitchburg,
WI, 53711



\$428,900

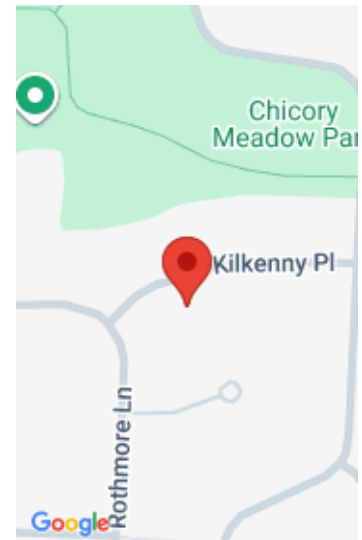


Seminole Highlands delivers a light-filled beauty with personality and wonderful updates. Large kitchen with granite, stainless, and wood floors just footsteps from main level family room w/gas fireplace for ambiance and winter evenings. Private office or main level living/music room – whatever you choose! Stunning master bath and four bedrooms complete upper level. Nicely finished...

- 5 beds
- 3 baths
- Res
- Sold
- 3655 sq ft



Pattie Tuscic
Restaino & Associates



Features

GarageYN: Yes

FireplaceYN: Yes

Utilities: Cable Available

AttachedGarageYN: Yes

PoolPrivateYN: No

Features: Cable Available,Dryer,Jetted bathtub,Kitchen Island,Upper Level,Walk-in Closet(s),Washer,Water softener inc

Above Grade Finished Area, sq ft: 2820

Below Grade Finished Area, sq ft: 835

Tax Year: 2014

Tax Amount: 7871

Inclusions: Some Window Coverings

Amenities

Waterfront available: No

Cooling:
Central Air

Amenities:

Dishwasher,Disposal,Dryer,Microwave,Range,Refrigerator,Washer,Water Softener Owned

Water Source:
Public

Sewer: Public Sewer

Building Details

NewConstructionYN: No

Heating: Forced Air, Natural Gas

Basement: Full,Full Size Windows/Exposed,Partially Finished

Exterior material:
Brick,Stone,Vinyl Siding

Parking: Attached,Garage Door Opener,Paved

Agent Details

Agent Full Name: Pattie Tuscic

Agent Email: ptuscic@restainohomes.com