

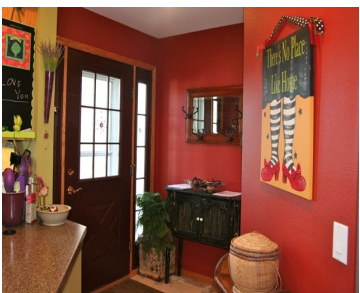
5719 STEEPLECHASE DRIVE, WI, 53597

<https://www.adashunjones.com>

5719 Steeplechase Drive, WI, 53597



\$245,000

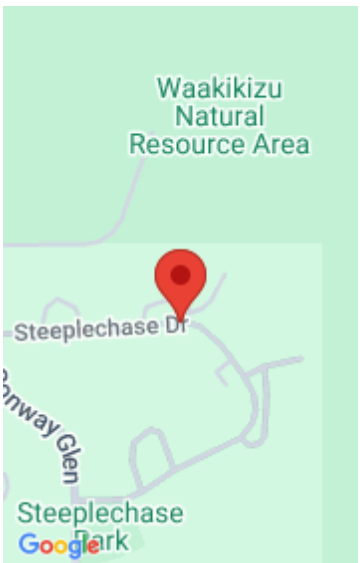


Light filled, loft style condo in a quiet setting close to Madison. Numerous upgrades include stainless steel appliances, Corian counter-tops, skylights, shingles and siding. Enjoy entertaining in this artful space and relax in the sun room on those hot days and cold nights. Large master suite on the main floor and loft style adds bonus...

- 2 beds
- 2 baths
- Condominium,Res
- Sold
- 1760 sq ft



Mark Gladue
Keller Williams Realty



Features

GarageYN: Yes

FireplaceYN: No

WindowFeatures: Skylight(s)

Features: Accessible Bedroom, Accessible Entrance, Accessible Full Bath, Breakfast Bar, Gas, Upper Level, Vaulted Ceiling(s), Walk-in Closet(s)

Tax Year: 2010

Inclusions: Humidifier, All window coverings

AttachedGarageYN: Yes

PoolPrivateYN: No

Utilities: Cable Available

Above Grade Finished Area, sq ft: 1760

Tax Amount: 4582

Amenities

Waterfront available: No

Amenities:

Dishwasher, Disposal, Dryer, Microwave, Range, Refrigerator, Washer, Water Softener Owned

Sewer: Public Sewer

Cooling:
Central Air

Water Source:
Public

Building Details

NewConstructionYN: No

Basement: Daylight, Full

Parking: Attached, Garage, Garage Door Opener

Heating: Forced Air, Natural Gas

Exterior material: Brick, Stone, Vinyl Siding

Agent Details

Agent Full Name: Mark Gladue

Agent Email: mark@LauerRealtyGroup.com