

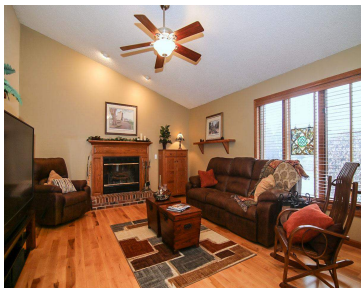
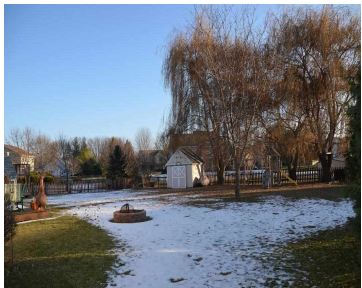
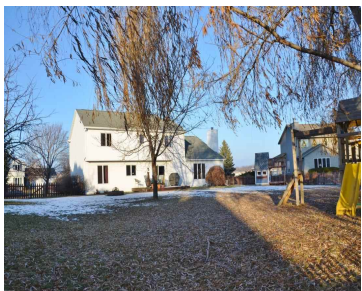
5673 CHERYL DRIVE, FITCHBURG, WI, 53711

https://www.adashunjones.com

5673 CHERYL Drive,
Fitchburg, WI,
53711



\$315,000



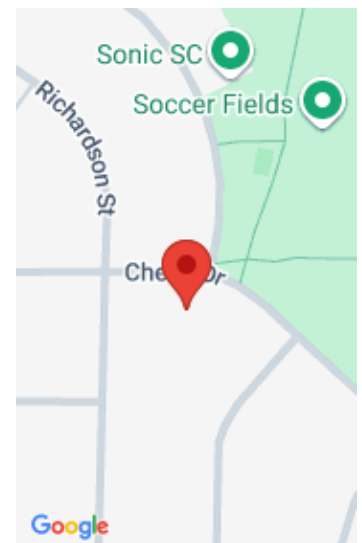
Terrific 4 BR in family friendly neighborhood just across from McKee Park! Vaulted LR w/ cozy wood FP, open to large Dinette w/ access to deck! On a huge ½ acre lot w/ fenced back yard – ready for activities! Newly refinished hardwood floor gleam throughout first and second floor! Open Kitchen has SS appliances!...

- 4 beds
- 3 baths
- Res
- Sold
- 3116 sq ft



Susi Haviland

Stark Company, REALTORS



Features

GarageYN: Yes

FireplaceYN: Yes

Utilities: Cable Available

AttachedGarageYN: Yes

PoolPrivateYN: No

Features: Breakfast Bar,Cable Available,Main Level,Pantry,Tankless Water Heater,Vaulted Ceiling(s),Walk-in Closet(s),Water softener inc,Wood Burning

Above Grade Finished Area, sq ft: 2366

Below Grade Finished Area, sq ft: 750

Tax Year: 2013

Tax Amount: 6201

Inclusions: Humidifier,All window coverings

Amenities

Waterfront available: No

Cooling:
Central Air

Amenities: Dishwasher,Disposal,Microwave,Range,Refrigerator,Tankless Water Heater,Water Softener Owned

Water Source:
Public

Sewer: Public Sewer

Building Details

NewConstructionYN: No

Heating: Forced Air, Natural Gas

Basement: Full,Partially Finished,Sump Pump

Exterior material: Brick,Stone,Vinyl Siding

Parking: Attached,Garage Door Opener,Paved

Agent Details

Agent Full Name: Susi Haviland

Agent Email: shaviland@starkhomes.com