

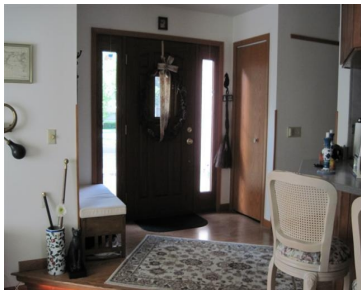
5667 CONCORD DRIVE, FITCHBURG, WI, 53575-1906

https://www.adashunjones.com

5667 Concord Drive, Fitchburg, WI, 53575-1906



\$284,900

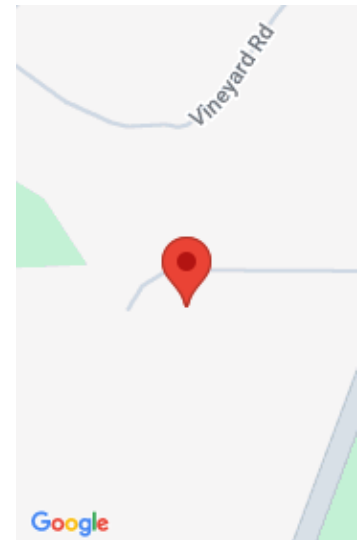


Gorgeous private setting for this spacious, quality updated ranch home in the heart of Fitchburg, just minutes from the belt line yet Oregon School District. . Open concept with ktichen, dining, living room w/ fireplace and garden room all open for great entertaining & bright southern exposure! Daylight exposed, finished lower level. Second ktichen &...

- 3 beds
- 2 baths
- Res
- Sold
- 2565 sq ft



Brenda Cuta
First Weber Inc



Features

GarageYN: Yes

FireplaceYN: Yes

WindowFeatures: Skylight(s)

Utilities: Cable Available

Above Grade Finished Area, sq ft:
1632

Tax Year: 2012

Inclusions: All window coverings

AttachedGarageYN: Yes

PoolPrivateYN: No

Lot Features: Cul-De-Sac, Subdivided

Features: Breakfast Bar,Cable Available,Dryer,Lower Level,Pantry,Walk-in Closet(s),Washer,Water softener inc,Wood Burning

Below Grade Finished Area, sq ft: 933

Tax Amount: 5866

Amenities

Waterfront available: No

Amenities:

Dishwasher,Disposal,Dryer,Microwave,Range,Refrigerator,Washer,Water Softener Owned

Sewer: Private Sewer

Cooling:
Central Air

Water Source:
Shared Well

Building Details

NewConstructionYN: No

Heating: Forced Air, Natural Gas

Basement: Full,Full Size Windows/Exposed,Partially Finished **Exterior material:** Vinyl Siding

Parking: Attached,Garage Door Opener,Paved

Agent Details

Agent Full Name: Brenda Cuta

Agent Email: cutab@firstweber.com