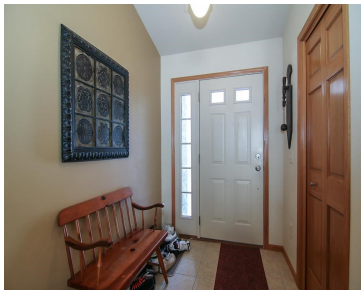


5665 KINSALE DRIVE, FITCHBURG, WI, 53711

https://www.adashunjones.com

5665 Kinsale Drive,
Fitchburg, WI,
53711



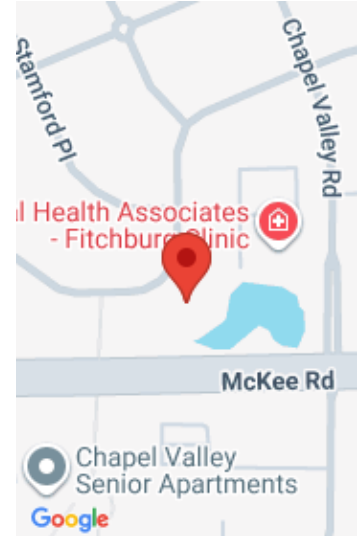
\$315,000

Popular Highlands or Seminole location. Forth bedroom recently added in lower level. Main floor offers great room w/ vaulted ceilings and gas fireplace. The kitchen has solid surfaces, updated appliances. Bright, sunny dinning area perfect place to start the day. Oversized maintenance free deck over looking adjacent pond. Large lower level rec room, Kitchenette and...

- 4 beds
- 3 baths
- Res
- Sold
- 2793 sq ft



Ken Kaiser
Inventure Realty Group, Inc



Features

GarageYN: Yes

FireplaceYN: Yes

Features: Accessible Bedroom, Accessible Full Bath, Gas, Main Level, Vaulted Ceiling(s), Water softener inc

Below Grade Finished Area, sq ft: 1335

Tax Amount: 6471

AttachedGarageYN: Yes

PoolPrivateYN: No

Above Grade Finished Area, sq ft: 1458

Tax Year: 2014

Inclusions: All window coverings

Amenities

Waterfront available: No

Cooling:
Central Air

Amenities: Dishwasher, Disposal, Microwave, Range, Refrigerator, Water Softener Owned

Water Source:
Public

Sewer: Public Sewer

Building Details

NewConstructionYN: No

Heating: Forced Air, Natural Gas

Basement: Finished, Full, Walk-Out Access

Exterior material: Brick, Stone, Vinyl Siding

Parking: Attached, Garage Door Opener, Paved

Agent Details

Agent Full Name: Ken Kaiser

Agent Email: kjkmadison@yahoo.com